

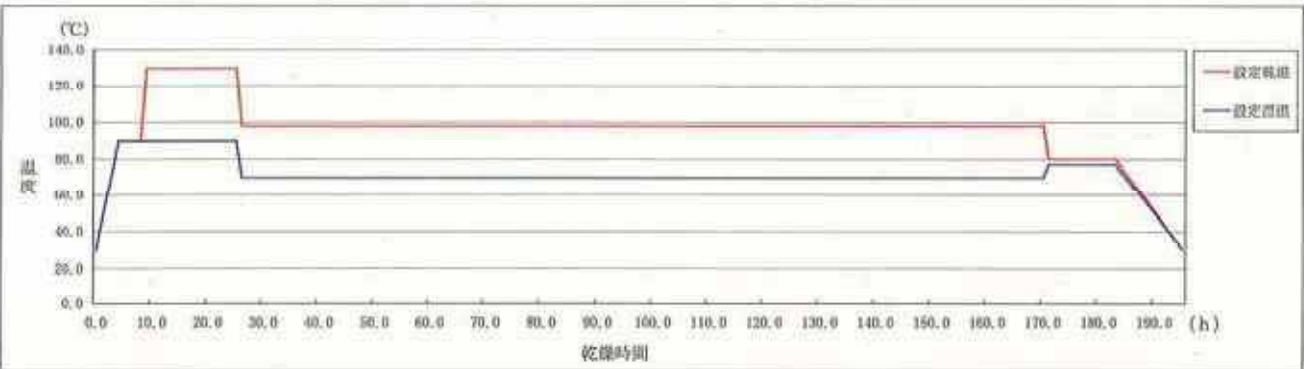
H15-①~⑤ 木材乾燥データ

H15-① 木材乾燥データ

■試験木データ

佐賀県産スギ (品種指定なし 20本)
規格等: L=3.0m 135mm×135mm 心持ち正角材

H15-① 乾燥スケジュール



区画	①	②	③	④	⑤	⑥	⑦	⑧	⑨	⑩	乾燥時間
設定乾燥温度	30°C	90°C	90°C	130°C	130°C	98°C	98°C	80°C	80°C	30°C	195h
設定湿度	30%	90%	90%	90%	90%	70%	70%	77%	77%	30%	
乾燥時間	-	4h	4h	1h	16h	1h	14.4h	1h	12h	12h	

H15-① (乾燥前)

NO.	品種	重量 W (kg)	材長 L (cm)	寸法		基本振動数 f (Hz)	材積 V (cm ³)	密度 g/cm ³	ヤング係数 E (tf/cm ²)	推定含水率 (%)	心材色 病害等
				材幅(mm)	材せい(mm)						
1-1	指定なし	34.70	300.0	135.20	135.83	579.0	55911.53	0.631	75.2	43.8	rb
1-2	"	33.20	300.0	134.38	134.79	602.5	54339.24	0.611	81.4	45.8	r
1-3	"	29.80	300.0	132.89	132.93	522.5	52995.20	0.562	56.4	43.4	r
1-4	"	27.05	300.0	132.94	133.04	597.5	53059.01	0.510	66.8	38.9	r
1-5	"	27.75	300.1	134.21	135.31	470.0	54498.03	0.509	41.3	52.7	rb
1-6	"	31.90	300.0	134.88	135.18	497.5	54699.24	0.583	53.0	46.8	r
1-7	"	33.00	300.1	135.31	135.19	535.0	54895.97	0.601	63.2	50.6	r
1-8	"	45.95	300.0	135.03	134.43	717.5	54456.25	0.844	-	118.0	rb
1-9	"	32.80	300.0	134.72	133.58	405.0	53987.69	0.608	36.6	57.8	rb
1-10	"	27.60	300.0	132.51	132.67	597.5	52740.31	0.523	68.6	46.8	rb
1-11	"	32.95	300.0	133.04	133.15	992.5	53142.83	0.620	-	45.0	r
1-12	"	30.85	300.0	135.24	134.63	977.5	54622.08	0.565	-	48.7	r
1-13	"	29.60	300.1	132.89	132.79	500.0	52957.04	0.559	51.3	41.3	r
1-14	"	32.50	300.0	134.79	134.74	967.5	54484.81	0.596	-	46.0	r
1-15	"	29.20	300.1	132.76	132.55	575.0	52809.61	0.553	67.2	51.7	rb
1-16	"	31.20	300.0	135.21	134.94	997.5	54735.71	0.570	-	41.5	r
1-17	"	30.95	300.1	135.26	134.80	477.5	54717.38	0.560	47.4	39.8	r
1-18	"	33.20	300.1	135.04	134.84	615.0	54644.59	0.608	84.4	54.9	rb
1-19	"	28.95	300.0	135.06	135.07	690.0	54727.66	0.529	92.5	41.3	r
1-20	"	27.85	300.0	135.56	135.54	517.5	55121.41	0.505	49.7	40.9	r
									62.0	49.8	

H15-① (乾燥後)

NO.	品種	重量 W (kg)	材長 L (cm)	寸法		基本振動数 f (Hz)	材積 V (cm ³)	密度 g/cm ³	ヤング係数 E (tf/cm ²)	試験片重 前 (g)	試験片重 後 (g)	全乾燥での 含水率 (%)	表面割れ (mm ²)	内部割れ (mm ²)
				材幅(mm)	材せい(mm)									
1-1	指定なし	26.70	300.0	131.39	132.30	665.0	52148.69	0.512	83.1	153.99	139.17	10.6	25.0	149.0
1-2	"	25.35	300.0	131.68	131.66	705.0	52010.97	0.487	88.9	144.18	129.54	11.3	25.5	111.6
1-3	"	23.10	300.0	130.64	131.43	615.0	51510.05	0.448	62.3	131.44	118.26	11.1	15.2	25.0
1-4	"	21.45	300.0	129.98	129.90	700.0	50653.21	0.423	76.2	133.70	121.41	10.1	1.0	62.6
1-5	"	19.65	299.9	132.03	130.99	587.5	51866.53	0.383	48.5	107.58	98.47	9.3	0.9	115.5
1-6	"	24.25	300.0	132.28	132.16	595.0	52446.37	0.462	60.1	165.43	148.23	11.6	23.3	158.8
1-7	"	23.80	299.9	131.52	131.28	655.0	51780.57	0.460	72.3	125.40	115.42	8.6	14.9	155.4
1-8	"	28.65	300.1	133.51	133.38	897.5	53440.50	0.536	-	169.70	124.84	35.9	0.8	19.4
1-9	"	23.95	299.9	131.61	131.77	987.5	52009.41	0.460	-	154.02	133.70	15.2	0.3	109.5
1-10	"	20.55	300.0	129.03	128.38	727.5	49694.61	0.414	80.3	123.72	113.18	9.3	0.7	44.7
1-11	"	25.10	300.0	130.18	129.68	602.5	50645.23	0.496	66.0	143.18	129.63	10.5	14.5	73.4
1-12	"	23.35	300.0	131.72	131.78	585.0	52074.18	0.448	56.3	135.79	120.06	12.5	0.9	16.3
1-13	"	23.10	299.9	128.96	129.84	597.5	50211.86	0.460	60.3	145.89	132.31	10.3	4.3	67.7
1-14	"	25.10	300.0	132.35	131.41	577.5	52176.34	0.481	58.9	136.05	121.22	12.7	0.5	15.3
1-15	"	31.50	300.0	129.87	129.67	600.0	50526.73	0.436	74.4	113.49	101.58	11.7	8.0	104.6
1-16	"	24.35	299.9	130.94	131.57	600.0	51066.10	0.471	62.2	124.55	112.78	10.4	2.8	116.8
1-17	"	24.55	299.9	131.11	131.71	567.5	51788.23	0.474	56.0	117.46	105.95	10.9	0.2	28.4
1-18	"	24.15	300.0	131.78	132.00	735.0	52184.88	0.463	91.8	162.49	144.24	12.7	1.2	111.7
1-19	"	22.40	300.0	130.53	130.06	805.0	50930.20	0.440	-	137.23	125.55	9.3	8.3	95.0
1-20	"	21.75	299.9	131.30	131.49	625.0	51776.65	0.420	60.2	140.88	128.01	10.1	5.9	95.1
									70.3			12.2	7.7	83.4



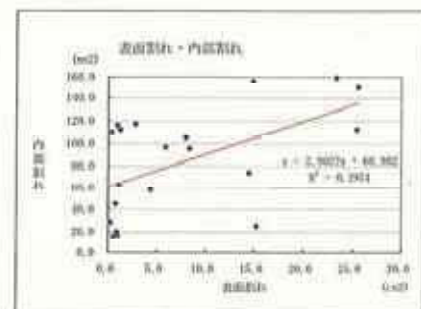
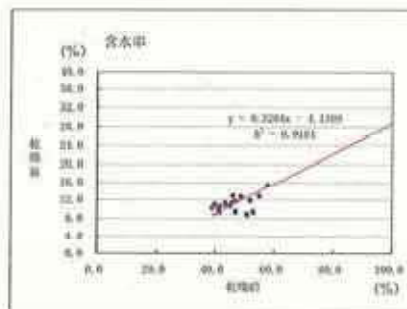
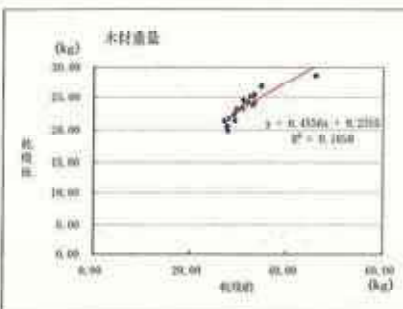
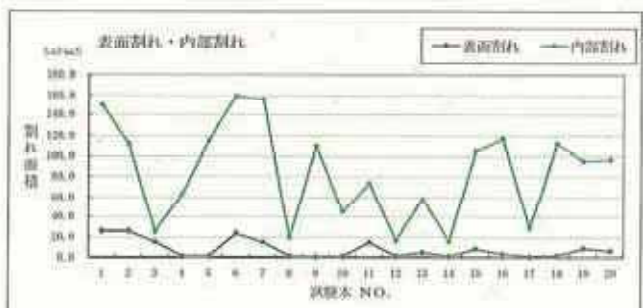
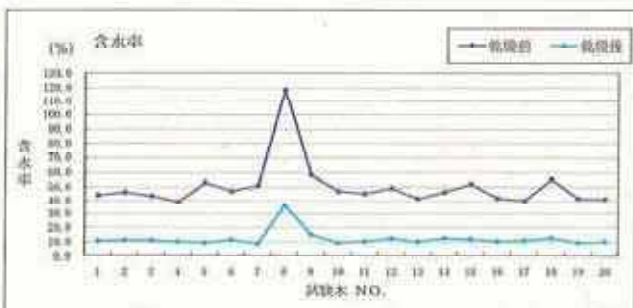
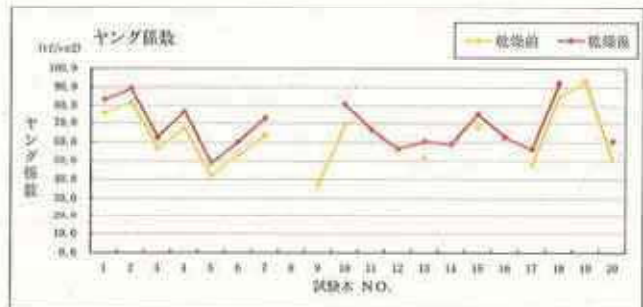
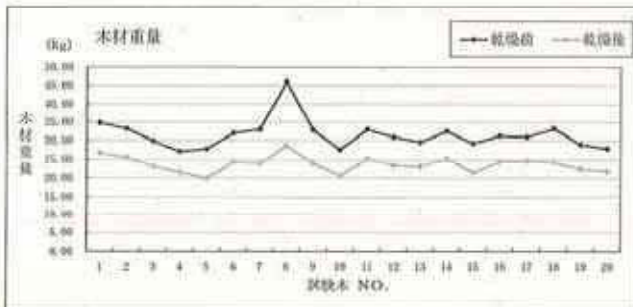
乾燥前(元口側)



乾燥後(元口側)



乾燥後(末口側)





乾燥後の試験片

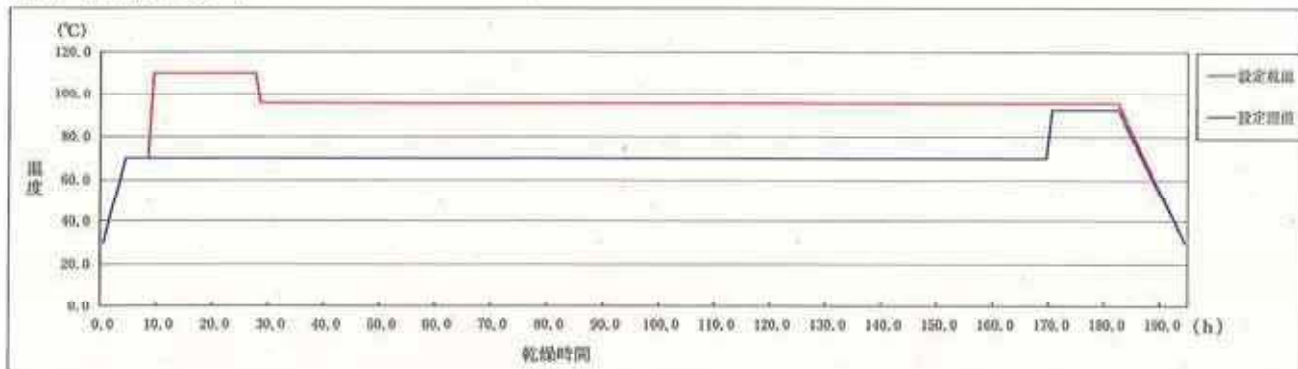
H15-② 木材乾燥データ

■試験木データ

佐賀県産スギ (品種指定なし 20本)

規格等: L=3.0m 135mm×135mm 心持ち正角材

H15-③ 乾燥スケジュール



区画	①	②	③	④	⑤	⑥	⑦	⑧	⑨	⑩	乾燥時間	
設定乾燥温度	30°C	70°C	70°C	110°C	110°C	95°C	95°C	95°C	95°C	30°C		194h
設定湿度	30%	70%	70%	70%	70%	70%	70%	92%	92%	30%		
乾燥時間	→	4h	4h	1h	18h	1h	141h	1h	12h	12h		

H15-④ (乾燥前)

NO.	品種	重量 W(kg)	材長 L(cm)	寸法		基本振動数 f (Hz)	材積 V (cm ³)	密度 g/cm ³	ヤング係数 E (tf/cm ²)	推定含水率 (%)	心材色 劣害等
				材幅(mm)	材せい(mm)						
2-1	指定なし	31.40	300.1	137.80	137.81	530.0	56989.64	0.551	56.9	37.3	r
2-2	#	32.80	300.0	137.54	138.13	547.5	56995.20	0.575	63.3	39.1	r
2-3	#	31.45	300.0	137.66	137.67	537.5	56854.96	0.553	58.7	38.1	r
2-4	#	31.50	300.0	137.34	138.03	517.5	56871.12	0.554	54.5	39.2	r
2-5	#	33.55	300.0	137.94	137.93	525.0	57078.19	0.588	59.5	38.0	r
2-6	#	49.85	300.1	138.15	138.71	847.5	57507.52	0.867	-	96.0	b
2-7	#	43.65	300.1	137.80	138.07	910.0	57097.16	0.764	-	92.7	b
2-8	#	36.80	300.0	138.06	137.85	985.0	57094.71	0.645	-	55.7	r
2-9	#	34.40	300.1	138.01	137.67	542.5	57018.51	0.603	65.2	40.0	r
2-10	#	33.60	300.1	137.89	138.48	536.0	57304.12	0.586	61.6	36.8	r
2-11	#	34.95	300.0	137.62	137.32	920.0	56693.94	0.616	-	58.1	r
2-12	#	33.20	300.1	137.75	137.68	550.5	56915.25	0.583	64.9	29.0	r
2-13	#	35.65	300.0	138.15	137.64	877.5	57044.90	0.625	-	64.4	rb
2-14	#	38.55	300.1	138.10	137.87	977.5	57138.58	0.675	-	73.8	rb
2-15	#	33.35	300.0	137.66	137.60	550.0	56826.05	0.587	65.2	35.6	r
2-16	#	42.85	300.0	136.82	137.59	987.5	56475.19	0.759	-	90.6	rb
2-17	#	34.45	300.0	137.48	138.14	537.5	56974.46	0.605	64.1	42.8	r
2-18	#	29.75	300.0	137.52	137.95	990.0	56912.65	0.523	-	35.6	r
2-19	#	31.80	300.0	137.06	137.28	537.5	56446.79	0.583	39.7	41.0	r
2-20	#	35.65	300.0	137.67	137.12	827.5	56631.93	0.630	64.3	49.3	r
									61.5	52.2	

H15-⑤ (乾燥後)

NO.	品種	重量 W(kg)	材長 L(cm)	寸法		基本振動数 f (Hz)	材積 V (cm ³)	密度 g/cm ³	ヤング係数 E (tf/cm ²)	試験片重 前 (g)	試験片重 後 (g)	全乾燥での 含水率(%)	表面割れ (cm ²)	内部割れ (mm ²)
				材幅(mm)	材せい(mm)									
2-1	指定なし	25.55	299.8	134.82	134.96	587.5	54549.53	0.468	59.3	164.82	147.48	11.8	19.1	6.2
2-2	#	26.50	299.9	134.78	134.87	615.0	54515.16	0.486	67.4	171.92	162.99	12.4	9.7	24.2
2-3	#	25.40	299.9	135.39	134.62	602.5	54660.38	0.465	61.9	171.34	153.61	11.5	15.6	10.2
2-4	#	25.45	299.9	134.72	135.83	580.0	54878.75	0.464	57.2	158.92	141.26	12.5	10.3	2.8
2-5	#	27.40	300.1	134.61	135.73	585.0	54830.12	0.500	62.8	162.50	144.23	12.7	50.3	55.7
2-6	#	33.95	300.1	136.73	137.30	510.0	56337.86	0.603	57.6	202.30	151.11	33.9	230.0	186.2
2-7	#	28.90	300.0	136.10	136.04	590.0	56945.13	0.520	69.9	183.62	143.96	27.0	315.2	148.5
2-8	#	28.05	300.0	136.86	135.56	577.5	55658.22	0.504	61.7	149.74	126.20	18.7	118.5	177.6
2-9	#	27.55	300.0	134.78	134.56	615.0	54497.99	0.506	70.3	175.41	150.50	12.1	42.1	69.2
2-10	#	27.55	300.0	134.91	135.42	600.0	54808.54	0.503	66.4	182.78	162.94	12.2	51.7	55.0
2-11	#	25.00	299.9	133.94	133.09	557.5	53432.28	0.468	53.9	153.65	135.85	13.1	95.0	56.6
2-12	#	26.80	300.0	135.20	133.74	617.5	54244.94	0.494	69.2	172.06	153.32	12.2	56.9	27.3
2-13	#	24.40	299.8	135.06	134.87	545.0	54610.29	0.447	48.7	162.76	144.69	12.5	32.3	144.7
2-14	#	25.10	300.1	135.19	134.45	610.0	54547.06	0.460	62.9	130.31	106.29	13.2	182.2	110.0
2-15	#	27.00	300.0	135.09	134.56	615.0	54533.13	0.504	70.0	160.54	148.90	11.8	45.5	13.5
2-16	#	28.05	300.0	135.90	136.10	607.5	55512.47	0.505	68.5	154.10	123.51	24.8	104.6	51.5
2-17	#	27.65	299.9	135.03	134.24	597.5	54361.16	0.509	66.6	178.21	155.51	14.6	40.4	62.4
2-18	#	24.45	299.9	134.58	134.70	572.5	54366.65	0.450	54.1	156.09	140.05	11.5	4.4	4.9
2-19	#	25.30	299.9	134.28	133.80	602.5	53882.03	0.470	62.5	144.00	128.37	12.2	31.1	15.0
2-20	#	28.10	300.0	136.86	135.22	592.5	55518.63	0.506	65.2	186.29	132.85	17.5	102.8	72.7
									64.9			15.4	74.9	64.0



乾燥前(元口側)



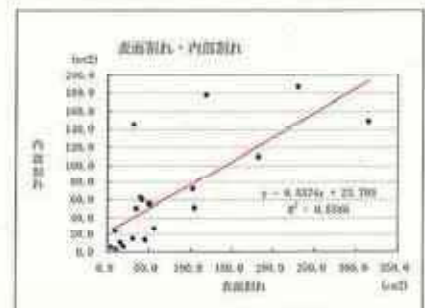
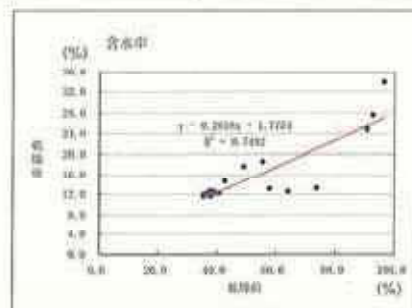
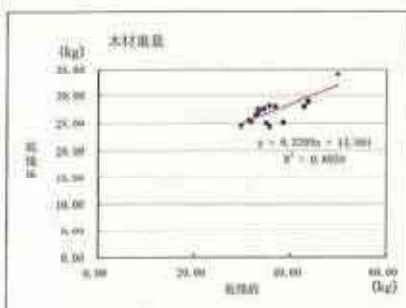
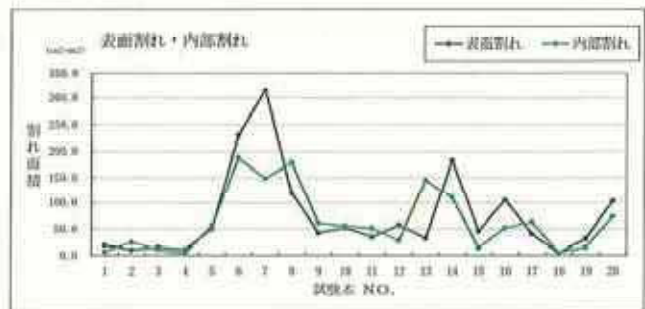
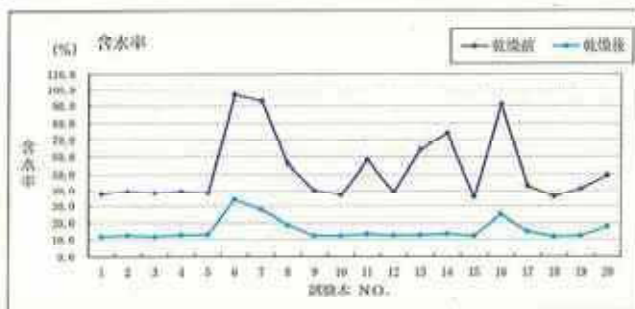
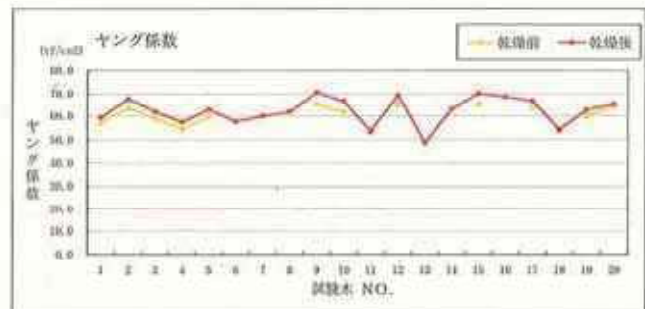
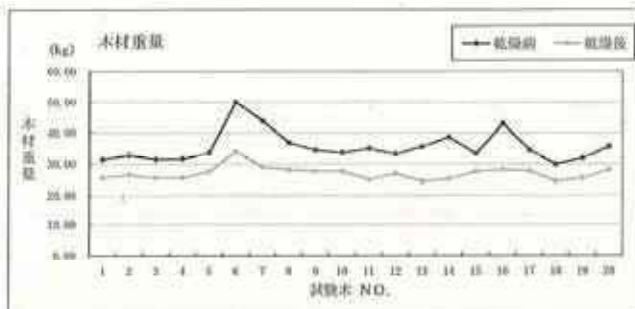
乾燥前(末口側)



乾燥後(元口側)



乾燥後(末口側)





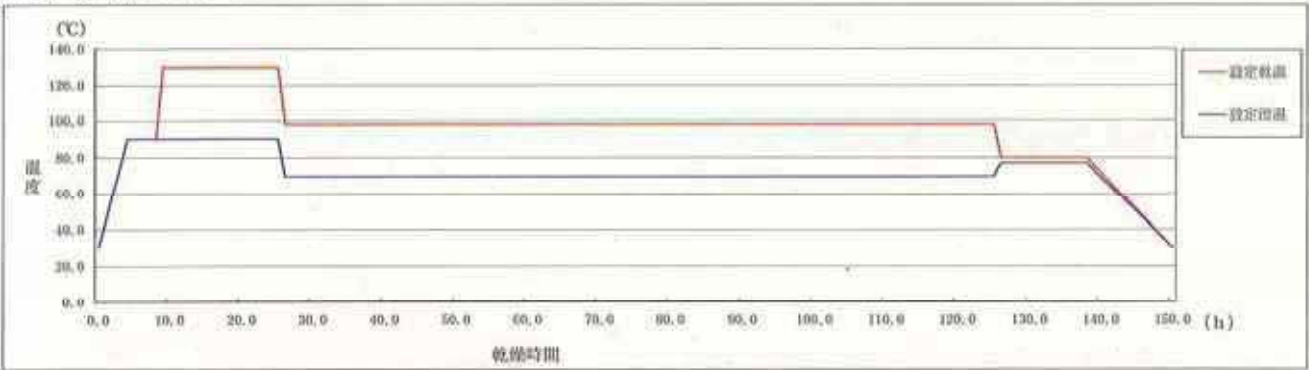
乾燥後の試験片

H15-③ 木材乾燥データ

■試験木データ

佐賀県産スギ (品種指定なし 20本)
規格等: L=3.0m 135mm×135mm 心持ち直角材

H15-③ 乾燥スケジュール



区分	①	②	③	④	⑤	⑥	⑦	⑧	⑨	⑩	乾燥時間
設定乾燥温度	30℃	90℃	90℃	130℃	130℃	98℃	98℃	80℃	80℃	30℃	150h
設定除湿温度	30℃	90℃	90℃	90℃	90℃	70℃	70℃	77℃	77℃	30℃	
乾燥時間	-	4h	4h	1h	10h	1h	99h	1h	12h	12h	

H15-③ (乾燥前)

NO.	品種	重量 W(kg)	材長 L(cm)	寸法		基本振動数 f (Hz)	材積 V (cm ³)	密度 g/cm ³	ヤング係数 E (tf/cm ²)	推定含水率 (%)	心材色 被害等	
				材幅(mm)	材せい(mm)							
3-1	指定なし	39.90	300.2	133.85	134.73	817.5	54136.90	0.737	-	110.0	b	
3-2	#	42.85	300.0	133.98	134.74	987.5	54157.40	0.791	-	140.7	b	
3-3	#	32.55	300.0	134.13	134.38	665.0	54073.17	0.602	97.7	67.3	rb	
3-4	#	36.70	300.0	133.98	134.25	627.5	53960.45	0.680	98.3	76.7	rb	
3-5	#	40.35	300.0	134.57	133.39	527.5	53850.88	0.749	76.5	132.1	b	
3-6	#	36.15	300.2	134.09	134.67	570.0	54530.24	0.603	79.2	86.4	b	
3-7	#	29.00	300.2	134.03	133.85	647.5	53855.63	0.538	83.0	57.7	rb	
3-8	#	34.35	300.0	134.13	133.09	570.0	53755.28	0.639	76.2	82.6	rb	
3-9	#	35.80	300.0	134.13	134.44	536.0	54097.31	0.662	60.5	85.3	rb	
3-10	#	28.15	300.0	133.56	134.47	647.5	53879.44	0.522	80.4	53.3	rb	
3-11	#	36.25	300.2	134.25	133.78	617.5	53915.81	0.672	94.2	77.1	b	
3-12	#	44.15	300.0	134.09	133.99	852.5	54141.34	0.815	-	153.1	b	
3-13	#	31.00	300.0	134.25	133.98	665.0	53960.45	0.574	93.3	60.6	rb	
3-14	#	44.95	300.2	134.83	134.77	537.5	54549.46	0.824	87.5	142.4	b	
3-15	#	33.40	300.2	134.02	134.27	660.0	54020.59	0.618	99.0	67.6	r	
3-16	#	30.55	300.2	134.17	134.43	617.5	54145.49	0.564	79.1	58.6	rb	
3-17	#	29.30	300.2	134.06	133.68	625.0	53799.26	0.545	78.2	60.7	rb	
3-18	#	30.65	300.2	133.98	134.28	617.5	54008.48	0.568	79.5	67.7	rb	
3-19	#	34.95	300.2	134.78	134.86	530.0	54065.65	0.641	66.1	80.5	rb	
3-20	#	31.20	300.0	134.22	134.29	640.0	54073.21	0.577	86.8	68.0	rb	
									80.7	86.4		

H15-③ (乾燥後)

NO.	品種	重量 W(kg)	材長 L(cm)	寸法		基本振動数 f (Hz)	材積 V (cm ³)	密度 g/cm ³	ヤング係数 E (tf/cm ²)	試験片重前 (g)	試験片重後 (g)	全乾法での含水率 (%)	表面割れ (cm ²)	内部割れ (mm ²)
				材幅(mm)	材せい(mm)									
3-1	指定なし	22.30	299.9	129.94	130.64	552.5	50909.11	0.438	49.1	123.69	105.38	17.4	23.9	301.5
3-2	#	24.60	299.9	132.47	133.07	667.5	52865.72	0.465	76.1	135.30	97.91	38.2	23.2	74.8
3-3	#	22.00	300.0	130.97	131.88	810.0	51816.97	0.425	-	144.64	127.94	13.1	91.9	97.4
3-4	#	24.10	300.0	131.47	131.15	792.5	51726.87	0.466	-	185.84	160.12	16.1	99.7	134.2
3-5	#	24.60	300.0	133.17	132.55	677.5	52955.05	0.465	78.3	168.92	119.35	41.5	34.0	81.2
3-6	#	22.65	300.0	133.38	131.79	745.0	52734.45	0.430	87.5	137.01	117.31	16.8	80.2	64.8
3-7	#	20.90	300.0	132.19	131.95	780.0	52327.41	0.389	89.2	121.38	106.79	13.7	8.8	65.1
3-8	#	21.80	300.0	132.14	131.75	710.0	52228.34	0.417	77.2	118.18	102.00	15.9	26.6	34.5
3-9	#	22.25	300.0	132.10	132.41	685.0	52485.97	0.424	73.9	123.35	107.08	15.2	16.8	7.1
3-10	#	20.70	300.0	131.12	132.31	780.0	52045.46	0.398	88.8	134.41	119.22	12.7	8.7	78.0
3-11	#	24.00	300.0	132.55	131.17	740.0	52159.75	0.460	92.5	133.16	113.49	17.3	67.2	90.3
3-12	#	23.35	299.8	133.15	132.71	590.0	52975.67	0.441	50.2	156.30	116.76	33.9	1.4	0.0
3-13	#	21.75	299.8	131.75	130.93	802.5	51715.58	0.421	99.3	152.69	135.50	12.7	81.2	79.0
3-14	#	26.05	300.0	132.92	132.77	702.5	52943.37	0.492	89.1	177.93	126.65	40.5	112.4	159.7
3-15	#	22.25	299.9	131.94	132.07	810.0	52258.52	0.426	-	173.91	154.84	11.7	27.5	39.1
3-16	#	21.90	299.9	132.34	132.51	745.0	52591.58	0.416	84.8	139.52	122.70	13.7	35.8	64.7
3-17	#	20.45	300.0	130.39	131.36	755.0	51384.09	0.398	83.3	120.93	107.84	12.1	11.8	31.4
3-18	#	21.00	299.9	132.32	132.05	767.5	52401.10	0.491	84.4	135.86	118.24	14.9	46.5	27.4
3-19	#	22.55	300.0	132.91	131.79	677.5	52548.63	0.429	72.3	130.78	112.31	16.4	2.2	25.1
3-20	#	20.95	300.0	131.40	131.58	797.5	51868.84	0.494	94.3	122.48	108.55	12.8	44.8	51.6
									85.3			19.3	42.3	75.3



乾燥前(元口側)



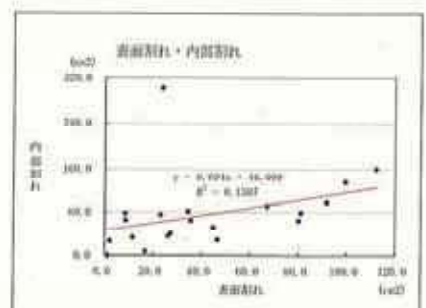
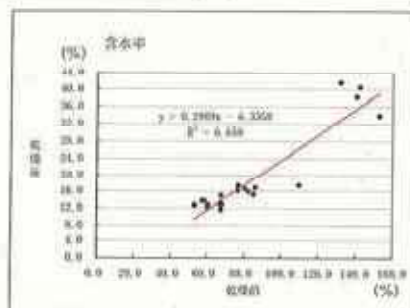
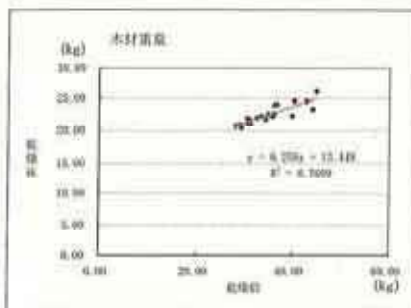
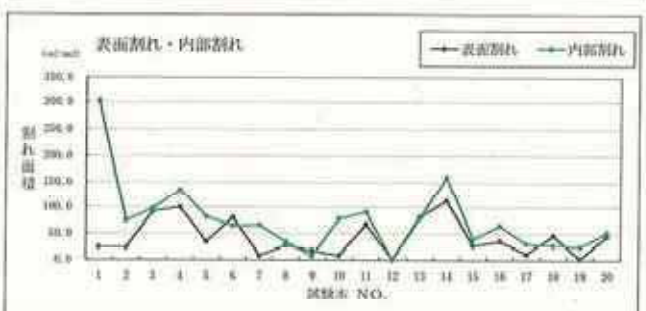
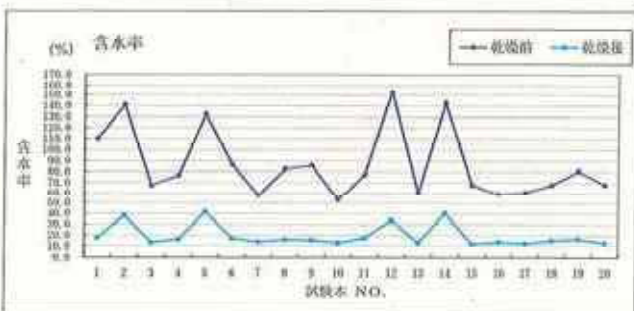
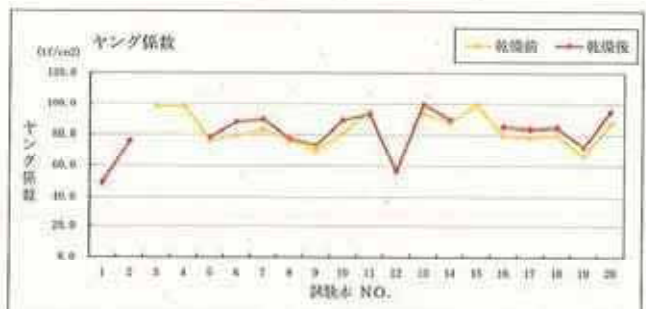
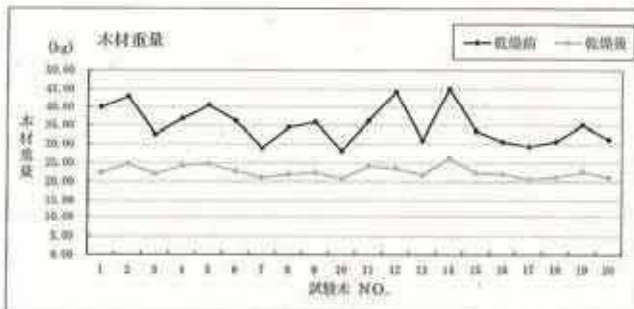
乾燥前(末口側)



乾燥後(元口側)

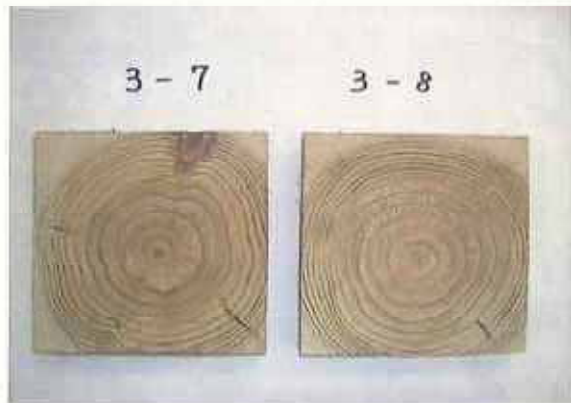
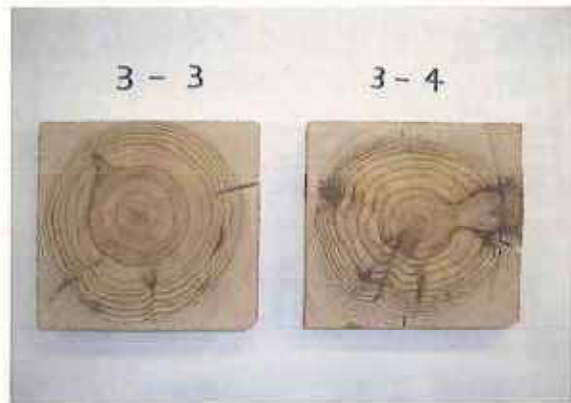
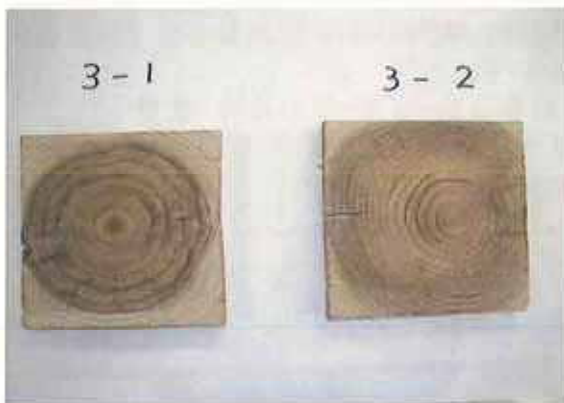


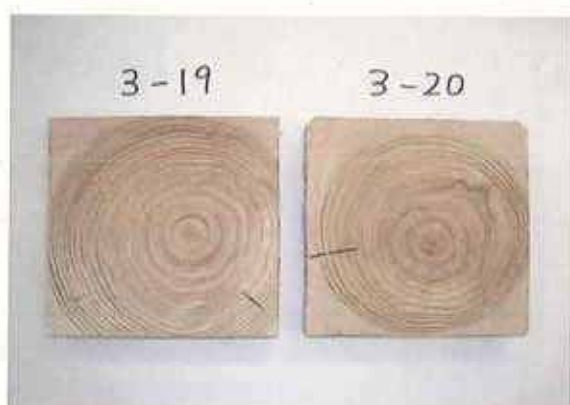
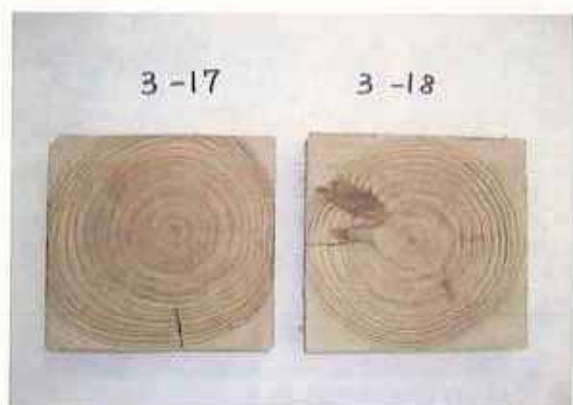
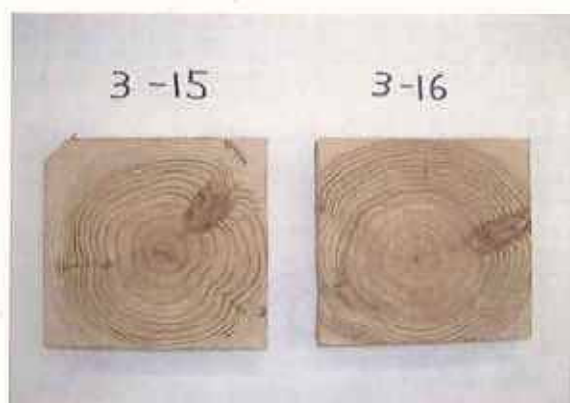
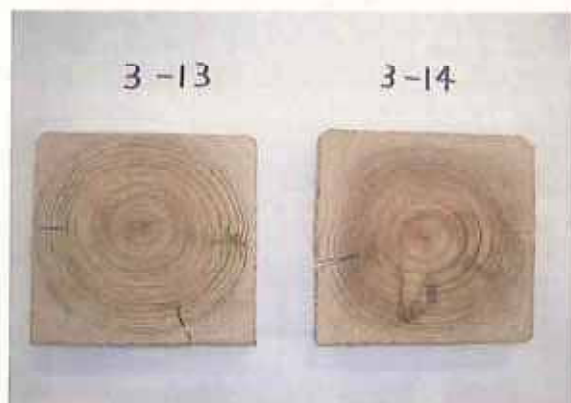
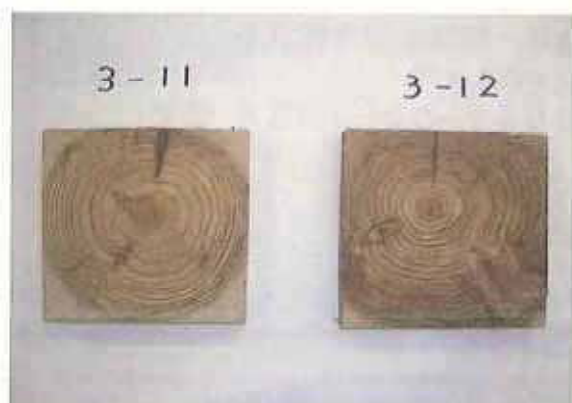
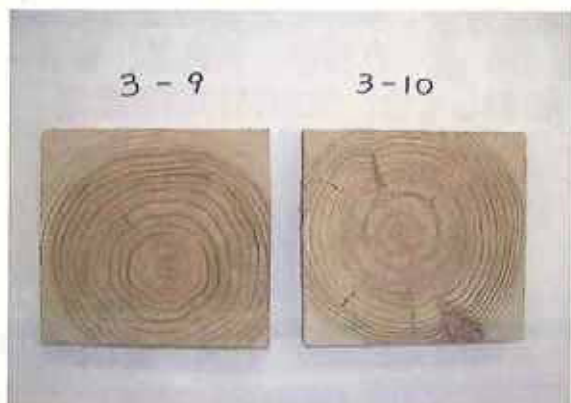
乾燥後(末口側)





乾燥後の試験片



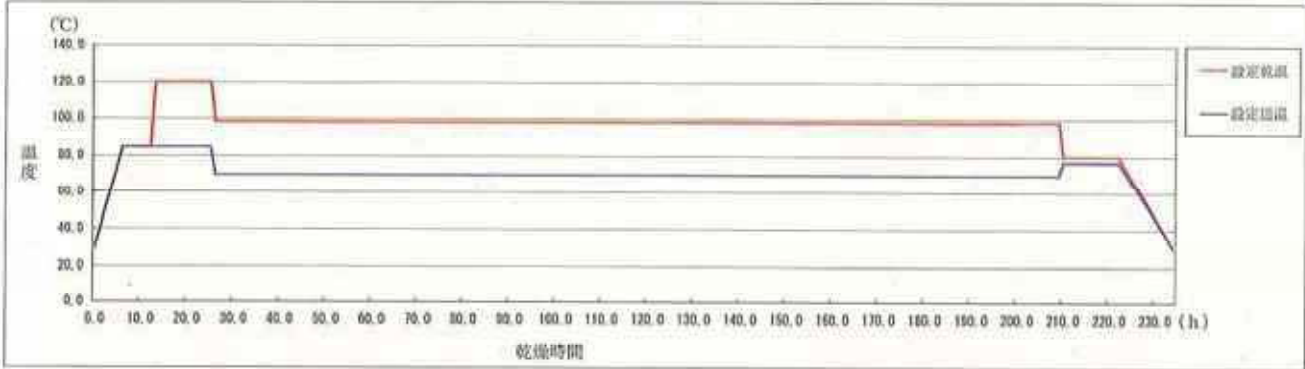


H15-④ 木材乾燥データ

■試験木データ

佐賀県産スギ (品種指定なし 20本)
規格等: L=3.0m 135mm×135mm 心持ち正角材

H15-④ 乾燥スケジュール



項目	①	②	③	④	⑤	⑥	⑦	⑧	⑨	⑩	乾燥時間
設定乾燥温度	30°C	85°C	85°C	120°C	120°C	98°C	98°C	80°C	80°C	30°C	234h
設定目標温度	30°C	85°C	85°C	85°C	90°C	70°C	70°C	77°C	77°C	30°C	
乾燥時間	→	6h	6h	1h	12h	1h	183h	4h	12h	12h	

H15-④ (乾燥前)

NO.	品 種	重 量 W(kg)	材 長 L (cm)	寸 法		基本振動数 f (Hz)	材 積 V (cm ³)	密 度 ρ (g/cm ³)	ヤング係数 E (tf/cm ²)	指定含水率 (%)	心材色 病害等
				材幅(mm)	材せい(mm)						
4-1	指定なし	49.55	300.2	137.24	136.93	995.0	56414.40	0.878	-	116.8	rb
4-2	#	31.45	300.1	136.73	136.98	940.0	56206.56	0.560	-	48.5	r
4-3	#	33.05	300.2	137.47	137.31	532.5	56665.77	0.583	60.8	65.4	r
4-4	#	33.80	300.1	136.42	136.35	997.5	55821.20	0.606	-	63.8	r
4-5	#	46.45	300.2	137.16	137.80	565.0	56739.75	0.819	96.1	116.4	rb
4-6	#	46.80	300.2	137.08	137.45	527.5	56562.62	0.822	84.1	99.3	b
4-7	#	30.85	300.2	136.43	136.64	960.0	55962.67	0.551	-	49.2	r
4-8	#	47.50	300.2	136.74	137.83	552.5	56578.32	0.840	94.2	110.3	b
4-9	#	32.75	300.2	136.78	137.22	547.5	56344.39	0.581	64.0	49.5	r
4-10	#	33.25	300.3	136.29	136.06	862.5	56686.48	0.597	-	76.6	r
4-11	#	33.00	299.2	136.44	136.96	987.5	55906.89	0.590	-	47.7	r
4-12	#	32.00	300.2	136.72	136.51	1015.0	56028.27	0.571	-	47.5	r
4-13	#	32.05	300.2	137.04	136.98	532.5	56352.76	0.569	59.3	47.8	r
4-14	#	33.85	300.3	136.99	136.83	967.5	56289.26	0.601	-	47.7	r
4-15	#	30.10	300.1	137.17	137.35	1020.0	56539.74	0.532	-	42.9	r
4-16	#	35.20	300.0	137.53	137.77	592.5	56842.52	0.619	79.8	61.3	r
4-17	#	46.75	300.2	136.87	136.59	842.5	56118.50	0.833	-	108.4	rb
4-18	#	34.75	300.1	136.86	136.81	952.5	56190.17	0.618	-	83.8	r
4-19	#	32.80	300.3	136.88	136.59	965.0	56145.41	0.584	-	46.0	r
4-20	#	44.80	300.3	137.34	137.72	572.5	56800.14	0.789	95.1	104.0	b
									79.2	71.8	

H15-④ (乾燥後)

NO.	品 種	重 量 W(kg)	材 長 L (cm)	寸 法		基本振動数 f (Hz)	材 積 V (cm ³)	密 度 ρ (g/cm ³)	ヤング係数 E (tf/cm ²)	試験片重 前 (g)	試験片重 後 (g)	全乾燥での 含水率(%)	表面割れ (cm ²)	内部割れ (mm ²)
				材幅(mm)	材せい(mm)									
4-1	指定なし	27.80	300.0	133.23	134.76	682.5	53862.22	0.516	88.3	152.29	125.22	21.6	106.8	199.0
4-2	#	23.25	299.6	132.92	134.39	567.5	53517.90	0.434	51.2	135.59	123.47	0.8	0.0	22.8
4-3	#	21.85	299.9	133.76	134.16	662.5	53817.78	0.406	65.4	138.58	126.74	9.3	20.9	26.3
4-4	#	22.75	299.9	133.67	133.18	627.5	53388.71	0.426	61.6	142.82	129.54	10.3	18.8	41.1
4-5	#	24.50	300.0	131.96	134.86	752.5	53388.38	0.459	95.4	139.10	121.89	14.1	99.4	81.4
4-6	#	26.45	300.0	136.70	133.97	692.5	54941.10	0.481	84.8	169.16	149.19	13.4	94.0	70.7
4-7	#	22.55	299.6	132.85	133.34	600.0	53111.75	0.425	56.0	140.55	128.87	9.1	0.1	25.4
4-8	#	25.45	300.0	133.38	135.15	722.5	54078.92	0.471	90.2	152.65	129.94	17.5	73.6	118.6
4-9	#	23.90	300.0	133.97	132.98	660.0	53086.95	0.450	72.0	128.00	117.33	9.1	19.0	67.4
4-10	#	22.00	300.0	134.27	134.04	547.5	53992.65	0.407	44.8	167.66	148.49	12.9	0.6	106.0
4-11	#	24.50	299.0	131.67	133.42	607.5	52526.56	0.466	62.8	137.01	124.98	9.6	0.6	59.5
4-12	#	23.70	300.0	132.62	133.19	620.0	52990.97	0.447	63.1	157.17	143.87	9.2	6.2	41.7
4-13	#	23.55	299.6	133.38	134.35	627.5	53687.13	0.439	63.2	139.60	128.67	8.6	18.3	25.7
4-14	#	25.10	299.8	133.00	132.97	590.0	53019.66	0.473	60.4	161.52	147.43	9.6	2.1	61.8
4-15	#	22.90	299.8	133.44	133.63	615.0	53459.10	0.438	59.4	134.38	123.63	8.7	1.8	56.7
4-16	#	23.75	299.6	133.86	133.90	732.5	53699.87	0.442	86.9	132.27	121.54	8.8	121.4	114.3
4-17	#	28.00	300.0	135.45	134.46	557.5	54637.82	0.512	58.5	166.17	133.10	24.8	30.5	27.9
4-18	#	26.80	299.9	132.65	131.66	637.5	52376.63	0.397	59.2	119.40	108.54	10.0	0.8	164.1
4-19	#	21.80	299.9	133.38	134.07	575.0	53628.89	0.462	66.1	161.72	146.49	10.4	0.0	247.6
4-20	#	24.90	300.0	133.75	134.21	750.0	53851.76	0.462	95.5	151.97	134.02	13.4	135.7	85.9
									81.7			12.0	37.5	82.2



乾燥前(元口側)



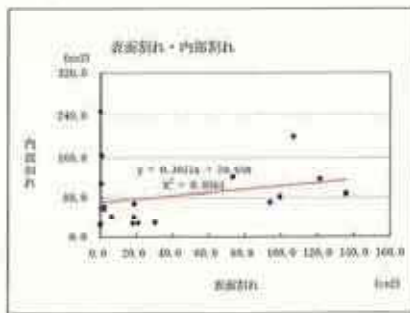
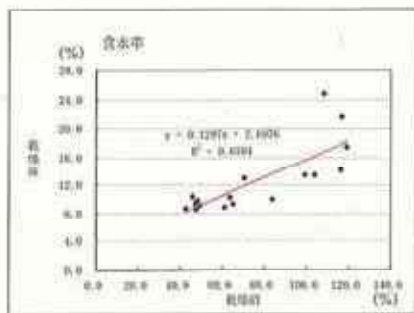
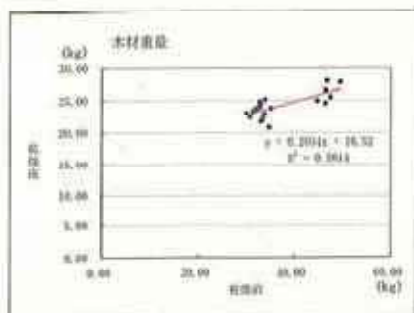
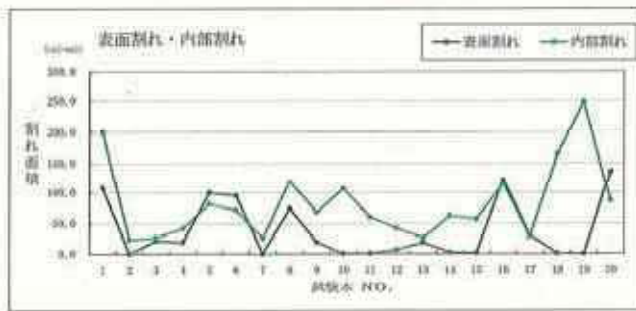
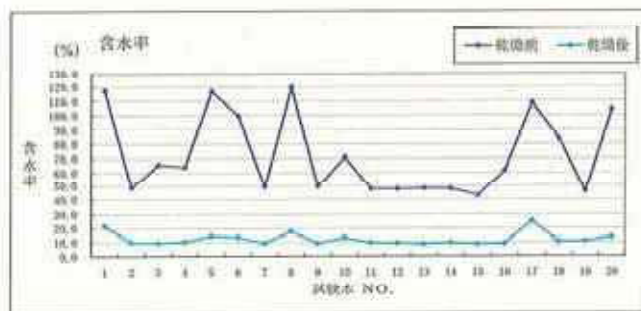
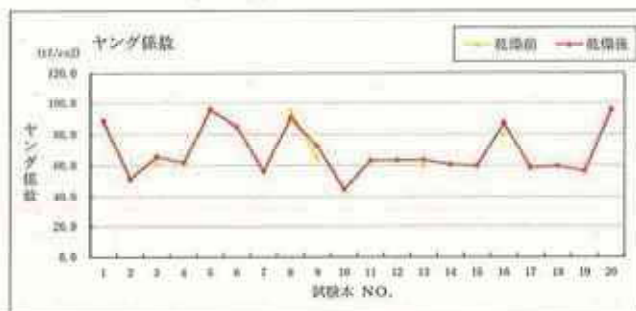
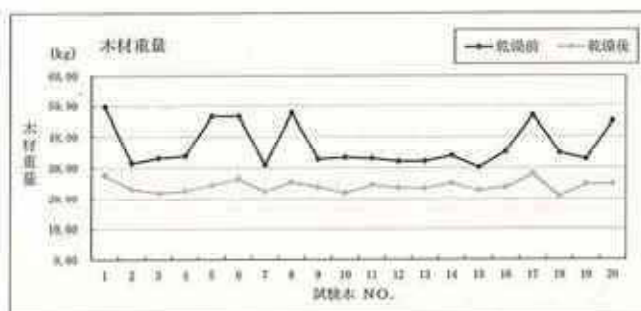
乾燥前(末口側)



乾燥後(元口側)

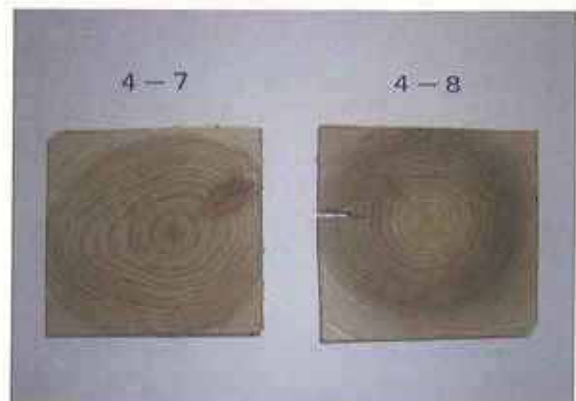
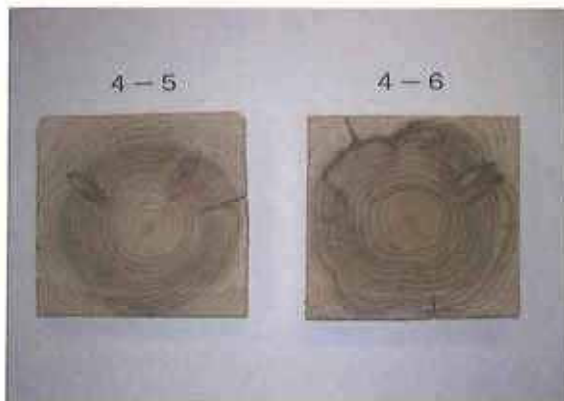
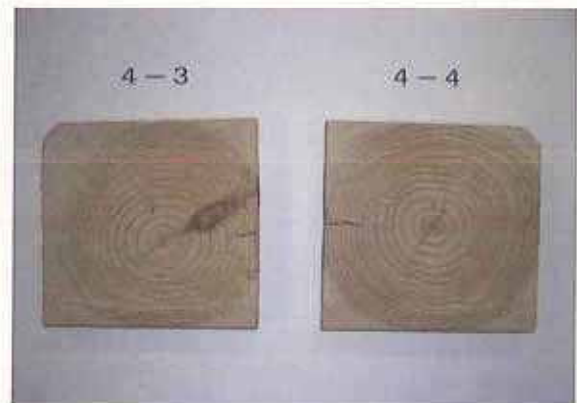
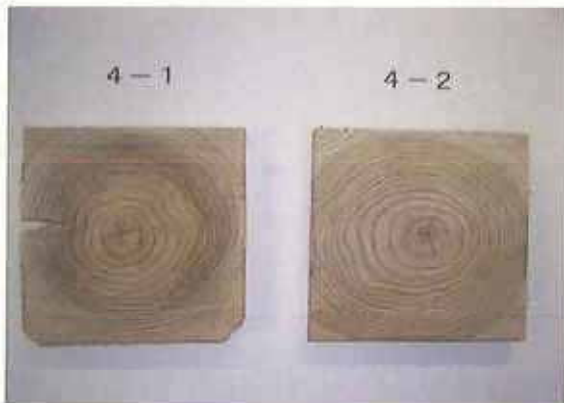


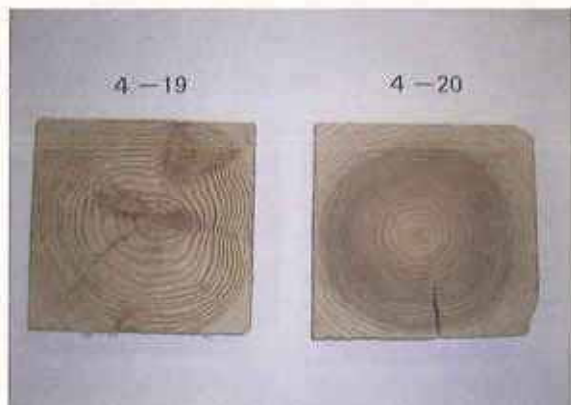
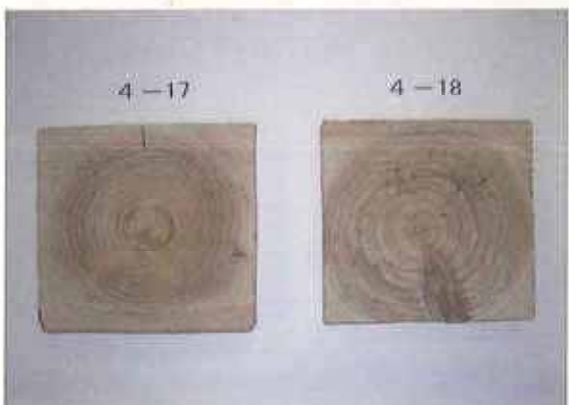
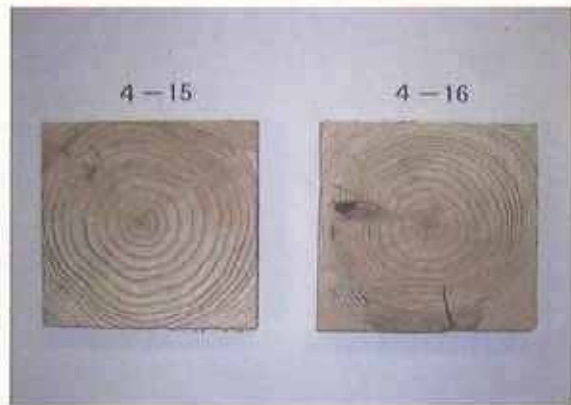
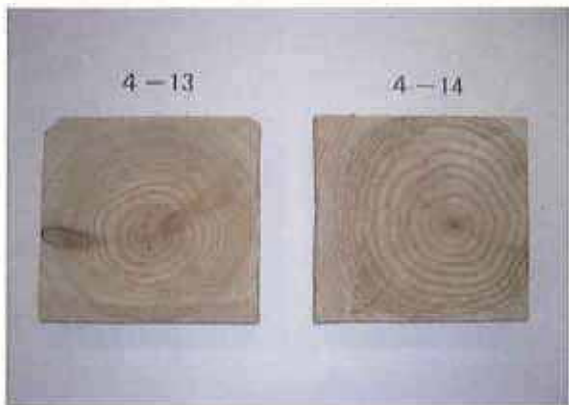
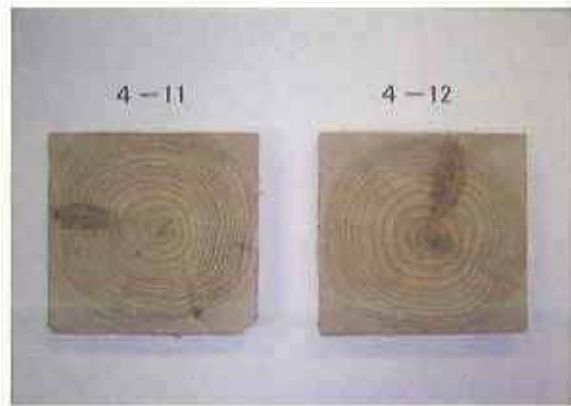
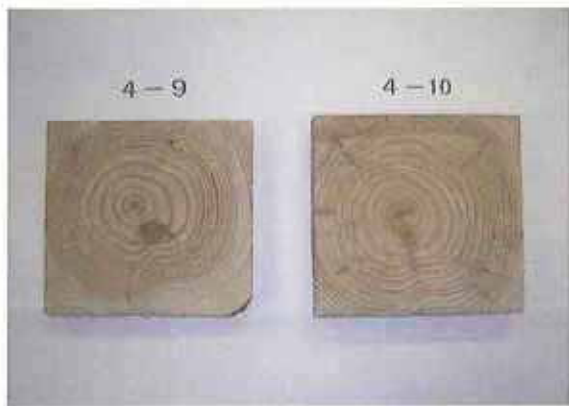
乾燥後(末口側)





乾燥後の試験片





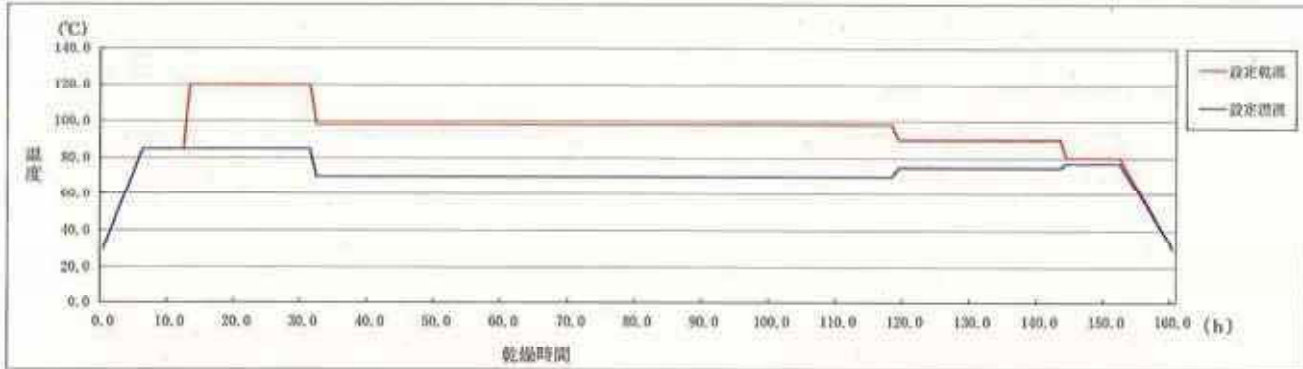
H15-⑤ 木材乾燥データ

■試験木データ

佐賀県産スギ (品種指定なし 20本)

規格等: L=3.0m 135mm×135mm 心持ち直角材

H15-⑤ 乾燥スケジュール



試片	①	②	③	④	⑤	⑥	⑦	⑧	⑨	⑩	⑪	⑫	⑬	⑭	⑮	乾燥時間
設定乾燥温度	30℃	85℃	85℃	120℃	120℃	98℃	98℃	90℃	90℃	80℃	80℃	30℃				160h
設定湿潤温度	30℃	85℃	85℃	85℃	85℃	70℃	70℃	75℃	75℃	77℃	77℃	30℃				
乾燥時間	→	6h	6h	1h	18h	1h	85h	1h	24h	1h	8h	8h				

H15-⑤ (乾燥前)

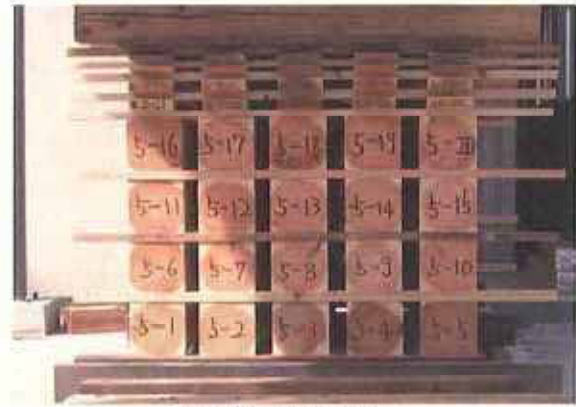
NO.	品 種	重 量 W(kg)	材 長 L(cm)	寸 法		基本振動数 f (Hz)	材 積 V (cm ³)	密 度 g/cm ³	ヤング係数 E (t/cm ²)	推定含水率 (%)	心材色 病害等
				材幅(mm)	材せい(mm)						
5-1	指定なし	29.00	300.1	134.92	135.97	575.0	55053.56	0.538	65.3	34.9	r
5-2	#	30.20	300.1	134.70	135.51	580.0	54777.84	0.551	68.1	34.8	r
5-3	#	34.90	300.2	136.26	135.47	572.5	55414.34	0.630	75.9	57.2	r
5-4	#	36.00	300.1	136.41	136.77	570.0	55989.04	0.654	78.0	56.5	rb
5-5	#	28.70	300.1	136.33	134.66	592.5	55092.95	0.521	67.2	44.5	rb
5-6	#	29.90	300.1	136.19	135.15	522.5	55236.64	0.534	53.5	54.4	rb
5-7	#	31.00	300.2	135.53	135.93	575.0	55304.62	0.561	68.1	39.2	rb
5-8	#	30.15	300.0	135.32	135.79	560.0	55125.31	0.547	63.0	38.8	r
5-9	#	30.10	300.0	134.88	135.27	532.5	54735.65	0.550	57.2	37.9	r
5-10	#	29.00	300.1	135.24	134.77	545.0	54697.11	0.530	57.8	39.2	r
5-11	#	28.95	300.2	135.47	136.41	590.0	55475.35	0.522	66.8	44.7	rb
5-12	#	29.75	300.1	135.68	136.32	620.0	55506.19	0.536	75.7	46.0	rb
5-13	#	28.65	300.1	134.34	134.67	542.5	54292.79	0.528	57.0	37.9	rb
5-14	#	28.65	300.1	134.57	135.68	570.0	54793.63	0.523	62.4	35.2	rb
5-15	#	28.45	300.2	135.52	134.54	570.0	54735.05	0.520	62.1	34.7	r
5-16	#	29.05	300.1	135.90	134.37	972.5	54800.91	0.530	-	55.8	rb
5-17	#	27.80	300.2	134.71	135.78	562.5	54909.35	0.506	58.9	38.0	rb
5-18	#	32.90	300.1	135.12	136.01	1005.0	55151.39	0.597	-	67.8	rb
5-19	#	29.40	300.1	136.04	134.63	617.5	54963.51	0.535	74.9	40.9	rb
5-20	#	29.95	300.2	135.36	136.36	627.5	55409.98	0.541	78.2	38.5	r
									66.1	43.8	

H15-⑤ (乾燥後)

NO.	品 種	重 量 W(kg)	材 長 L(cm)	寸 法		基本振動数 f (Hz)	材 積 V (cm ³)	密 度 g/cm ³	ヤング係数 E (t/cm ²)	試験片重 前 (g)	試験片重 後 (g)	全乾法での 含水率(%)	表面割れ (cm ²)	内部割れ (cm ²)
				材幅(mm)	材せい(mm)									
5-1	指定なし	24.95	300.0	131.79	132.74	662.5	52481.41	0.458	73.8	151.46	138.22	9.6	6.1	11.8
5-2	#	24.65	299.8	131.61	133.00	665.0	52472.38	0.470	76.2	134.16	121.90	10.1	22.4	38.3
5-3	#	25.45	300.0	134.20	134.46	675.0	54133.60	0.470	78.6	172.58	150.51	14.7	61.0	23.3
5-4	#	27.40	300.0	134.24	135.63	657.5	54620.91	0.502	79.6	162.24	138.50	17.1	83.8	55.0
5-5	#	22.30	300.0	133.34	132.59	685.0	53038.65	0.420	72.4	126.53	112.67	12.3	11.2	53.0
5-6	#	21.75	300.0	132.74	133.03	612.5	52975.21	0.411	56.5	110.31	96.93	13.8	14.3	129.4
5-7	#	24.70	300.0	131.48	132.72	655.0	52350.08	0.472	74.3	136.12	122.72	10.9	11.7	38.7
5-8	#	23.85	299.5	132.94	132.65	645.0	52832.94	0.451	68.8	152.59	138.93	9.8	12.3	24.8
5-9	#	24.15	298.5	132.18	132.50	595.0	52314.35	0.462	69.4	154.69	139.75	10.6	0.6	45.7
5-10	#	22.95	299.5	132.87	132.93	620.0	52898.92	0.434	61.0	124.89	113.37	10.2	0.8	54.9
5-11	#	22.50	300.5	132.96	134.79	690.0	53656.75	0.418	71.1	143.62	127.71	12.5	18.3	38.9
5-12	#	22.95	299.7	132.99	134.20	722.5	53488.23	0.429	82.1	113.09	100.42	12.6	36.3	100.2
5-13	#	22.90	299.8	130.80	131.59	622.5	51601.49	0.444	63.0	147.18	133.54	10.2	1.3	10.3
5-14	#	23.35	299.9	131.16	132.01	652.5	52161.99	0.448	69.9	150.53	136.75	10.1	6.7	130.4
5-15	#	23.20	300.0	132.06	131.69	652.5	51935.24	0.447	69.8	142.16	129.44	9.8	4.0	41.7
5-16	#	21.00	300.0	134.39	132.65	690.0	53480.50	0.393	51.9	113.38	100.65	12.6	3.0	142.9
5-17	#	22.15	300.0	131.31	133.27	647.5	52499.05	0.422	64.9	127.08	115.57	10.0	1.9	24.7
5-18	#	23.35	300.0	133.00	134.39	617.5	53821.61	0.435	61.0	146.70	123.19	19.1	55.9	65.6
5-19	#	23.10	299.9	132.46	132.05	715.0	52852.56	0.437	82.0	138.64	125.27	10.7	30.9	165.4
5-20	#	24.10	300.0	133.52	134.44	715.0	53851.29	0.448	84.0	159.10	142.71	11.5	70.3	92.8
									71.5			11.9	22.7	64.4



乾燥前(元口側)



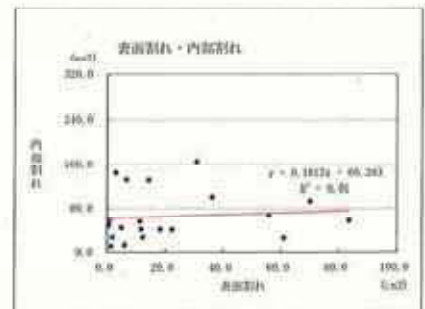
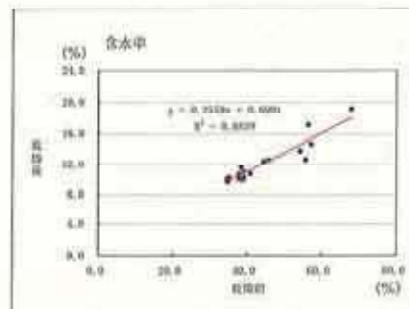
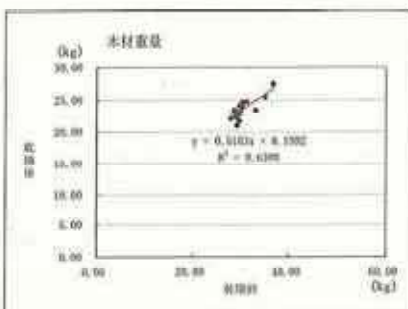
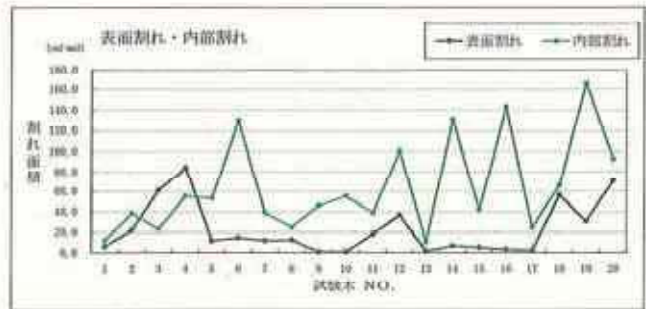
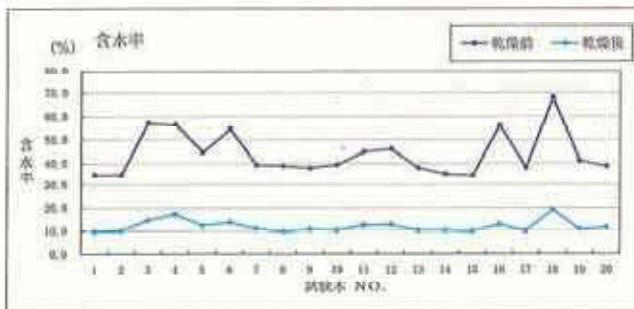
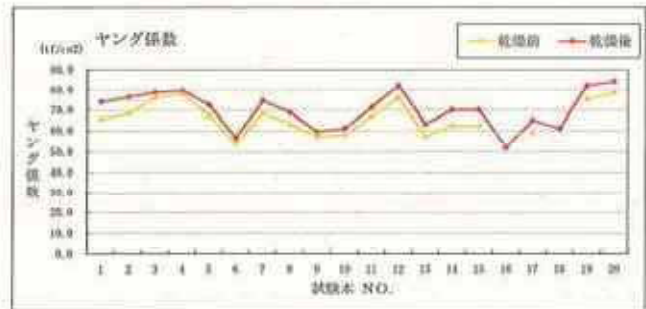
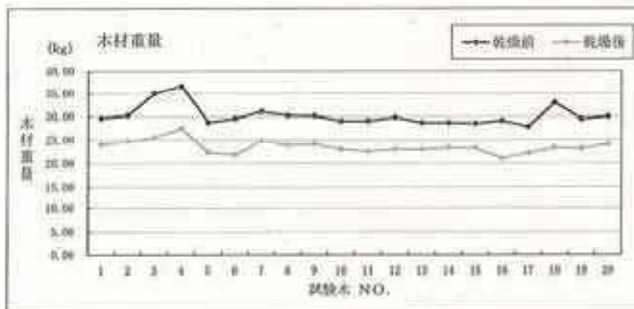
乾燥前(末口側)



乾燥後(元口側)



乾燥後(末口側)





乾燥後の試験片

