

H16-①~④ 木材乾燥データ



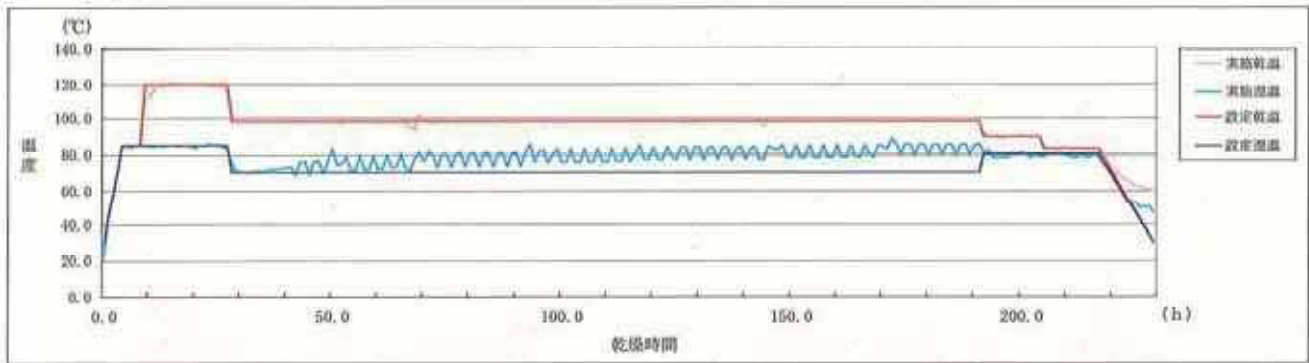
H16-① 木材乾燥データ

■試験木データ

佐賀県産スギ (品種指定なし 20本)

規格等: L=3.0m 135mm×135mm 心持ち正角材

H16-① 乾燥スケジュール



| 区分     | ①    | ②    | ③    | ④     | ⑤     | ⑥    | ⑦    | ⑧    | ⑨    | ⑩    | ⑪    | ⑫    | 乾燥時間 |
|--------|------|------|------|-------|-------|------|------|------|------|------|------|------|------|
| 設定乾燥温度 | 30°C | 85°C | 85°C | 120°C | 120°C | 98°C | 98°C | 90°C | 90°C | 83°C | 83°C | 30°C | 229h |
| 設定湿度   | 3.0% | 8.5% | 8.5% | 8.5%  | 8.5%  | 7.0% | 7.0% | 8.0% | 8.0% | 8.0% | 8.0% | 3.0% |      |
| 乾燥時間   | -    | 4h   | 4h   | 1h    | 19h   | 1h   | 103h | 1h   | 12h  | 1h   | 12h  | 12h  |      |

H16-① (乾燥前)

| NO.  | 品種   | 重量<br>W(kg) | 材長<br>L (cm) | 寸法     |         | 基本振動数<br>f (Hz) | 材積<br>V (cm <sup>3</sup> ) | 密度<br>g/cm <sup>3</sup> | ヤング係数<br>E (tf/cm <sup>2</sup> ) | 推定含水率<br>(%) | 心材色<br>樹皮等 |  |
|------|------|-------------|--------------|--------|---------|-----------------|----------------------------|-------------------------|----------------------------------|--------------|------------|--|
|      |      |             |              | 材幅(mm) | 材せい(mm) |                 |                            |                         |                                  |              |            |  |
| A-1  | 指定なし | 34.15       | 300.1        | 135.70 | 135.12  | 930.0           | 55025.69                   | 0.621                   | -                                | 51.9         | rb         |  |
| A-2  | #    | 34.75       | 300.1        | 135.32 | 135.40  | 1510.0          | 54985.31                   | 0.632                   | -                                | 52.3         | rb         |  |
| A-3  | #    | 29.85       | 300.0        | 134.08 | 134.27  | 980.0           | 54008.76                   | 0.553                   | -                                | 41.1         | rb         |  |
| A-4  | #    | 29.65       | 300.0        | 133.65 | 133.70  | 947.5           | 53807.02                   | 0.553                   | -                                | 44.5         | rb         |  |
| A-5  | #    | 34.85       | 300.2        | 135.78 | 134.44  | 950.0           | 54799.30                   | 0.636                   | -                                | 45.4         | rb         |  |
| A-6  | #    | 32.10       | 300.1        | 134.55 | 134.44  | 842.5           | 54284.79                   | 0.591                   | -                                | 55.5         | rb         |  |
| A-7  | #    | 32.20       | 300.1        | 134.02 | 134.64  | 560.0           | 54151.40                   | 0.595                   | 68.5                             | 43.9         | rb         |  |
| A-8  | #    | 37.85       | 300.2        | 134.55 | 135.98  | 847.5           | 54924.92                   | 0.689                   | -                                | 69.9         | b          |  |
| A-9  | #    | 37.35       | 300.1        | 135.77 | 135.75  | 957.5           | 55310.70                   | 0.675                   | -                                | 53.4         | rb         |  |
| A-10 | #    | 31.85       | 300.2        | 134.11 | 135.61  | 942.5           | 54596.34                   | 0.583                   | -                                | 46.6         | rb         |  |
| A-11 | #    | 31.70       | 300.2        | 134.10 | 135.10  | 1000.0          | 54388.96                   | 0.583                   | -                                | 44.9         | rb         |  |
| A-12 | #    | 35.90       | 300.1        | 134.90 | 135.05  | 1000.0          | 54672.95                   | 0.640                   | -                                | 53.1         | rb         |  |
| A-13 | #    | 31.85       | 300.1        | 134.58 | 134.27  | 902.5           | 54228.24                   | 0.587                   | -                                | 43.6         | rb         |  |
| A-14 | #    | 35.10       | 300.2        | 135.85 | 134.38  | 515.0           | 54803.08                   | 0.640                   | 62.4                             | 45.8         | rb         |  |
| A-15 | #    | 40.85       | 300.1        | 134.59 | 135.24  | 837.5           | 54624.06                   | 0.748                   | -                                | 87.3         | b          |  |
| A-16 | #    | 35.10       | 300.2        | 134.59 | 134.93  | 912.5           | 54517.01                   | 0.644                   | -                                | 58.0         | b          |  |
| A-17 | #    | 31.40       | 300.1        | 135.14 | 133.86  | 950.0           | 54287.61                   | 0.578                   | -                                | 47.7         | rb         |  |
| A-18 | #    | 34.65       | 300.0        | 134.75 | 135.39  | 942.5           | 54731.41                   | 0.633                   | -                                | 55.7         | rb         |  |
| A-19 | #    | 33.65       | 300.0        | 134.13 | 134.25  | 900.0           | 54020.86                   | 0.623                   | -                                | 55.6         | rb         |  |
| A-20 | #    | 35.80       | 300.1        | 130.44 | 135.20  | 1010.0          | 55358.51                   | 0.647                   | -                                | 50.7         | b          |  |
| 平均   |      |             |              |        |         |                 |                            |                         | 65.5                             | 52.3         |            |  |

H16-① (乾燥後)

| NO.  | 品種   | 重量<br>W(kg) | 材長<br>L (cm) | 寸法     |         | 基本振動数<br>f (Hz) | 材積<br>V (cm <sup>3</sup> ) | 密度<br>g/cm <sup>3</sup> | ヤング係数<br>E (tf/cm <sup>2</sup> ) | 試験片重<br>前 (g) | 試験片重<br>後 (g) | 全乾法での<br>含水率 (%) | 表面割れ<br>(cm <sup>2</sup> ) | 内割れ<br>(cm <sup>2</sup> ) |
|------|------|-------------|--------------|--------|---------|-----------------|----------------------------|-------------------------|----------------------------------|---------------|---------------|------------------|----------------------------|---------------------------|
|      |      |             |              | 材幅(mm) | 材せい(mm) |                 |                            |                         |                                  |               |               |                  |                            |                           |
| A-1  | 指定なし | 24.50       | 299.9        | 131.74 | 131.93  | 590.0           | 52123.99                   | 0.470                   | 69.0                             | 203.56        | 186.78        | 9.0              | 2.0                        | 212.2                     |
| A-2  | #    | 25.20       | 300.0        | 131.59 | 131.98  | 618.0           | 52101.74                   | 0.484                   | 66.1                             | 135.80        | 122.95        | 10.5             | 1.3                        | 156.8                     |
| A-3  | #    | 23.05       | 300.0        | 130.05 | 130.28  | 587.5           | 50832.65                   | 0.453                   | 57.5                             | 145.98        | 133.97        | 9.0              | 2.0                        | 130.7                     |
| A-4  | #    | 22.40       | 299.9        | 129.89 | 130.64  | 582.5           | 50820.70                   | 0.440                   | 54.7                             | 137.87        | 126.27        | 9.2              | 0.9                        | 52.7                      |
| A-5  | #    | 26.00       | 299.9        | 131.09 | 129.86  | 587.5           | 51053.02                   | 0.509                   | 64.5                             | 150.62        | 138.86        | 8.5              | 4.8                        | 118.4                     |
| A-6  | #    | 22.80       | 300.0        | 131.45 | 131.50  | 520.0           | 51857.03                   | 0.440                   | 43.6                             | 148.36        | 134.34        | 10.4             | 0.1                        | 113.1                     |
| A-7  | #    | 24.50       | 300.0        | 130.77 | 131.91  | 662.5           | 51749.61                   | 0.473                   | 76.3                             | 144.70        | 132.17        | 9.5              | 9.1                        | 68.3                      |
| A-8  | #    | 25.15       | 299.9        | 131.37 | 132.11  | 535.0           | 52048.52                   | 0.483                   | 50.7                             | 162.54        | 144.01        | 12.9             | 3.3                        | 50.7                      |
| A-9  | #    | 26.40       | 299.8        | 131.17 | 130.06  | 612.5           | 51381.74                   | 0.514                   | 70.7                             | 177.72        | 163.80        | 8.5              | 4.4                        | 61.9                      |
| A-10 | #    | 23.75       | 299.9        | 130.09 | 131.42  | 577.5           | 51272.19                   | 0.463                   | 56.7                             | 159.34        | 145.79        | 9.3              | 0.5                        | 100.8                     |
| A-11 | #    | 23.90       | 300.0        | 130.31 | 131.41  | 602.5           | 51372.11                   | 0.465                   | 62.0                             | 146.92        | 134.44        | 9.3              | 0.4                        | 51.8                      |
| A-12 | #    | 24.95       | 300.0        | 131.51 | 131.83  | 620.0           | 52010.89                   | 0.480                   | 67.7                             | 160.15        | 146.75        | 9.1              | 0.4                        | 121.7                     |
| A-13 | #    | 24.30       | 299.8        | 130.80 | 130.58  | 557.5           | 51225.01                   | 0.474                   | 54.1                             | 158.20        | 144.37        | 9.6              | 1.5                        | 91.2                      |
| A-14 | #    | 26.35       | 300.0        | 131.88 | 131.46  | 622.5           | 52010.83                   | 0.507                   | 72.1                             | 174.51        | 159.46        | 9.4              | 6.7                        | 128.4                     |
| A-15 | #    | 25.80       | 300.1        | 129.77 | 131.68  | 532.5           | 51281.45                   | 0.503                   | 52.4                             | 176.62        | 149.34        | 18.3             | 8.6                        | 219.3                     |
| A-16 | #    | 24.80       | 299.8        | 131.80 | 131.88  | 560.0           | 52110.59                   | 0.476                   | 54.7                             | 166.80        | 149.49        | 11.6             | 0.3                        | 74.7                      |
| A-17 | #    | 23.20       | 299.8        | 130.60 | 130.15  | 575.0           | 50958.77                   | 0.455                   | 55.2                             | 179.03        | 164.10        | 9.1              | 1.8                        | 133.2                     |
| A-18 | #    | 24.60       | 299.9        | 130.94 | 131.73  | 577.5           | 51728.93                   | 0.476                   | 58.2                             | 172.37        | 155.96        | 10.5             | 2.0                        | 87.1                      |
| A-19 | #    | 23.90       | 299.9        | 130.42 | 130.86  | 560.0           | 51183.22                   | 0.467                   | 53.7                             | 176.54        | 159.79        | 10.5             | 1.0                        | 100.1                     |
| A-20 | #    | 26.10       | 300.0        | 131.25 | 130.94  | 620.0           | 51557.63                   | 0.506                   | 71.4                             | 182.02        | 165.63        | 9.9              | 11.4                       | 60.9                      |
| 平均   |      |             |              |        |         |                 |                            |                         | 74.2                             |               |               | 10.2             | 3.1                        | 106.7                     |



乾燥前(元口側)



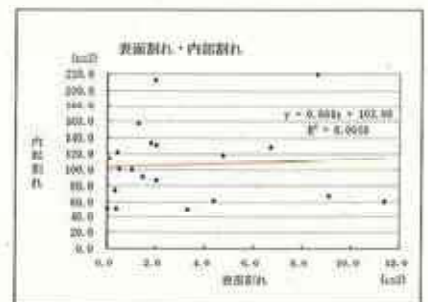
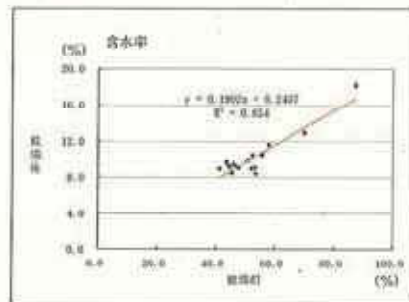
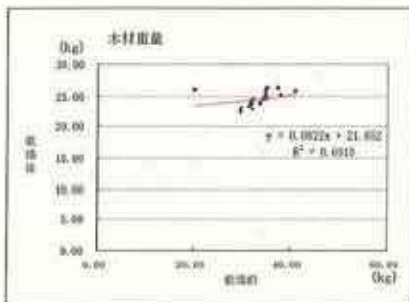
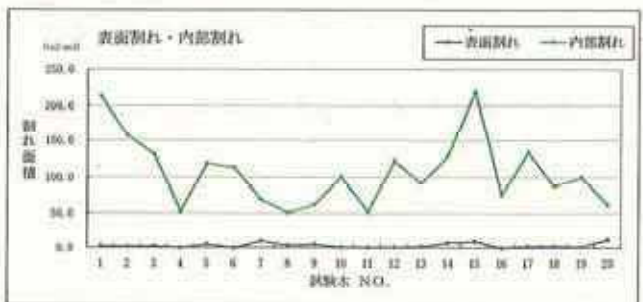
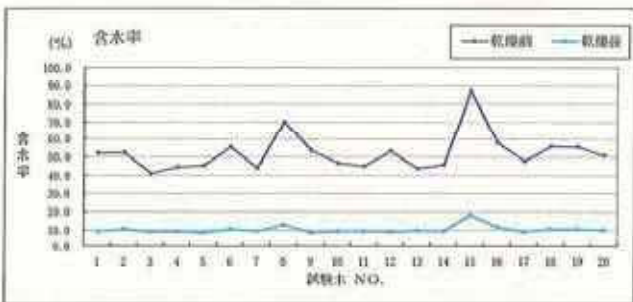
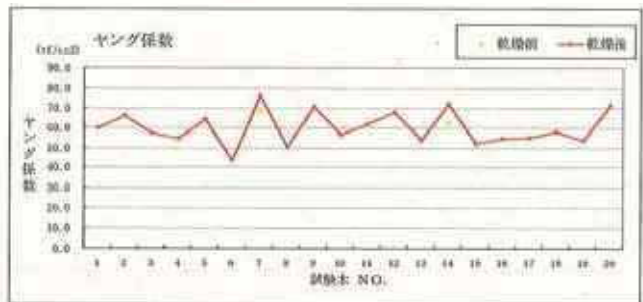
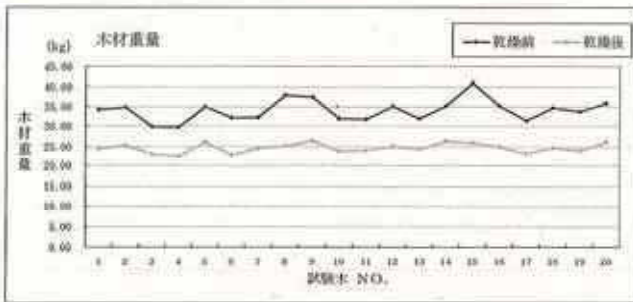
乾燥前(末口側)



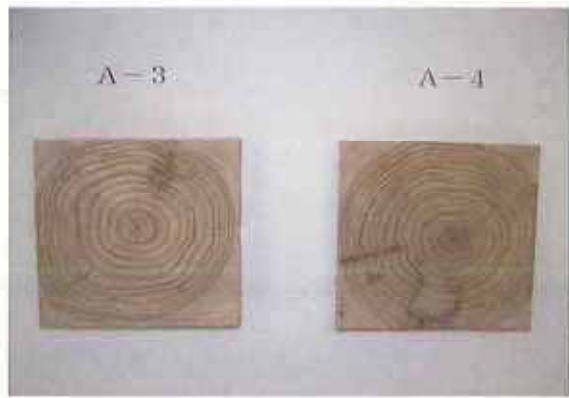
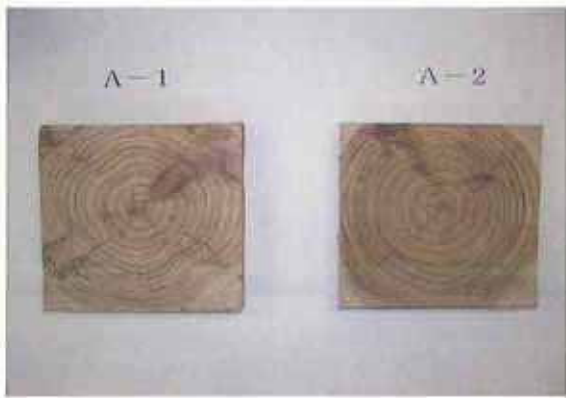
乾燥後(元口側)



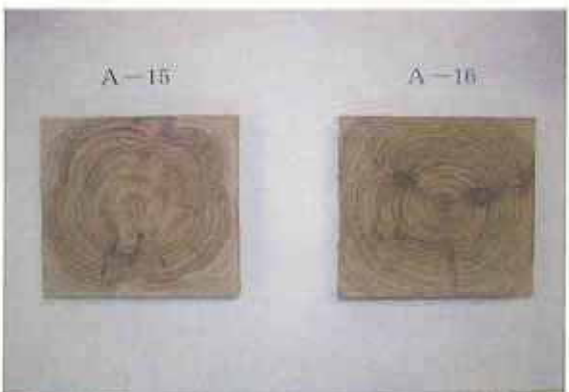
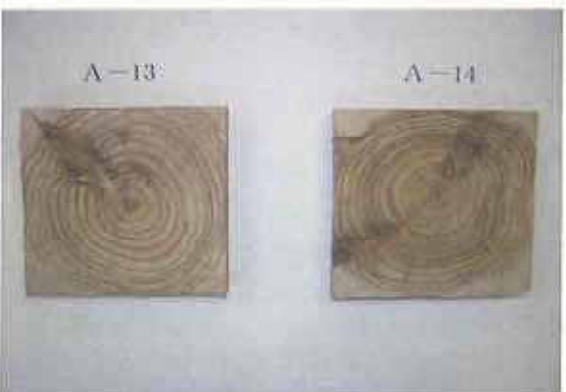
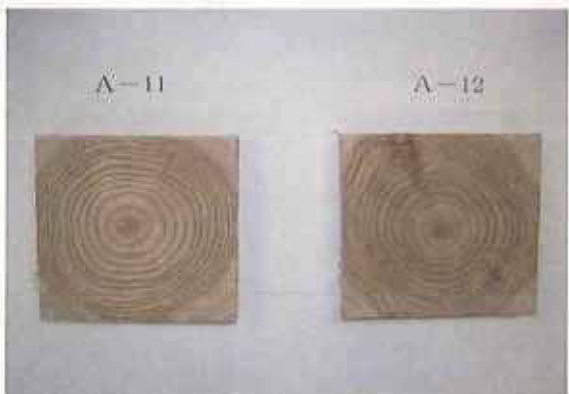
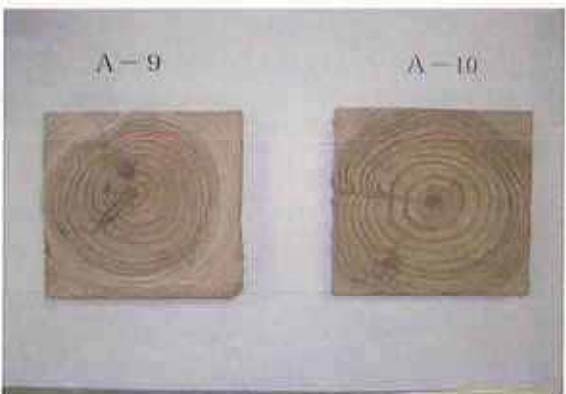
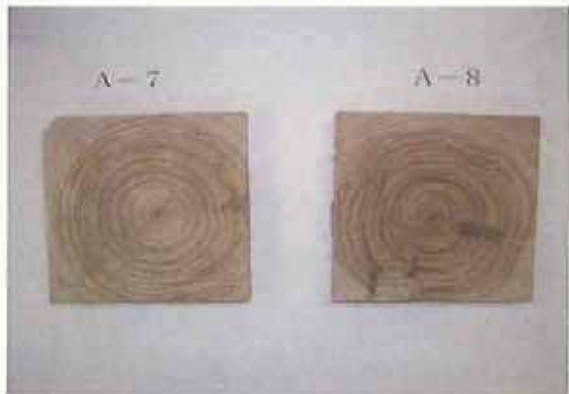
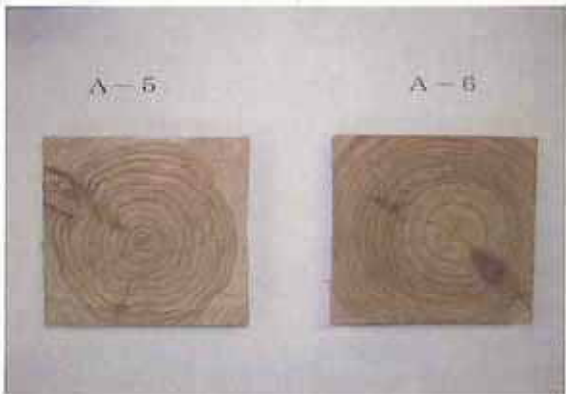
乾燥後(末口側)

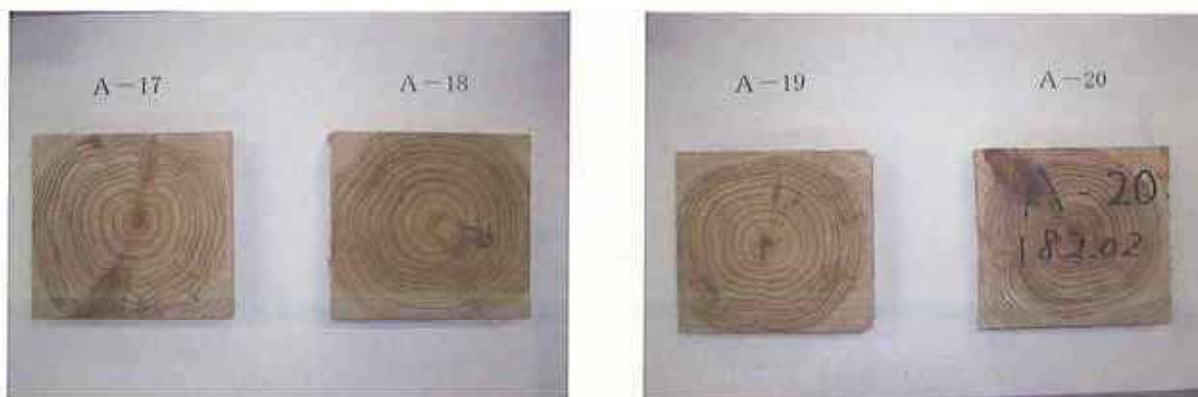






乾燥後の試験片





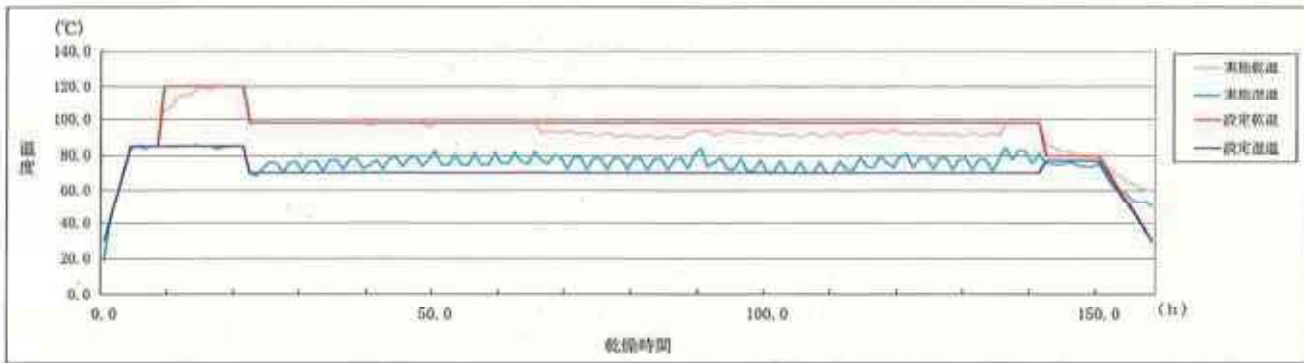
乾燥後の試験片

H16-② 木材乾燥データ

■試験木データ

佐賀県産スギ (品種指定なし 40本)  
規格等: L=3.0m 110mm×110mm 心持ち正角材

H16-② 乾燥スケジュール



| 区 分    | ①   | ②   | ③   | ④    | ⑤    | ⑥   | ⑦    | ⑧    | ⑨    | ⑩   | 乾燥時間 |
|--------|-----|-----|-----|------|------|-----|------|------|------|-----|------|
| 設定乾燥温度 | 30℃ | 85℃ | 85℃ | 120℃ | 120℃ | 98℃ | 98℃  | 80℃  | 80℃  | 30℃ | 158h |
| 設定露湿温度 | 30℃ | 85℃ | 85℃ | 85℃  | 85℃  | 70℃ | 70℃  | 7.5℃ | 7.5℃ | 30℃ |      |
| 乾燥時間   | -   | 4h  | 4h  | 1h   | 12h  | 1h  | 119h | 1h   | 8h   | 8h  |      |

H16-② (乾燥前)

| NO.  | 品 種  | 重 量<br>W (kg) | 材 長<br>L (cm) | 寸 法     |         | 基本振動数<br>f (Hz) | 材 積<br>V (cm <sup>3</sup> ) | 密 度<br>g/cm <sup>3</sup> | ヤング係数<br>E (tf/cm <sup>2</sup> ) | 推定含水率<br>(%) | 心材色<br>腐害等 |
|------|------|---------------|---------------|---------|---------|-----------------|-----------------------------|--------------------------|----------------------------------|--------------|------------|
|      |      |               |               | 材幅 (mm) | 材厚 (mm) |                 |                             |                          |                                  |              |            |
| B-1  | 指定なし | 20.80         | 300.2         | 112.22  | 112.25  | 567.5           | 37815.28                    | 0.550                    | 65.1                             | 50.0         |            |
| B-2  | #    | 21.65         | 300.1         | 111.88  | 112.83  | 510.0           | 37882.88                    | 0.571                    | 54.6                             | 48.3         |            |
| B-3  | #    | 24.29         | 300.1         | 112.51  | 112.09  | 480.0           | 37846.35                    | 0.639                    | 54.1                             | 46.6         |            |
| B-4  | #    | 18.50         | 300.1         | 111.28  | 111.30  | 470.0           | 37168.78                    | 0.498                    | 40.4                             | 37.2         |            |
| B-5  | #    | 20.15         | 300.1         | 112.25  | 111.18  | 580.0           | 37452.34                    | 0.538                    | 66.5                             | 42.4         |            |
| B-6  | #    | 18.30         | 300.1         | 110.89  | 110.61  | 540.0           | 36808.89                    | 0.497                    | 53.3                             | 38.1         |            |
| B-7  | #    | 23.00         | 300.0         | 112.35  | 111.43  | 555.0           | 37557.48                    | 0.612                    | 69.2                             | 56.5         |            |
| B-8  | #    | 20.95         | 300.1         | 110.71  | 111.36  | 510.0           | 36998.33                    | 0.606                    | 54.1                             | 39.3         |            |
| B-9  | #    | 20.75         | 300.1         | 111.39  | 112.22  | 530.0           | 37513.06                    | 0.553                    | 57.1                             | 47.0         |            |
| B-10 | #    | 22.35         | 300.1         | 115.16  | 114.59  | 567.5           | 39601.75                    | 0.564                    | 66.8                             | 75.0         |            |
| B-11 | #    | 28.80         | 300.1         | 111.98  | 111.63  | 485.0           | 37513.48                    | 0.768                    | 66.3                             | 82.5         |            |
| B-12 | #    | 18.50         | 300.0         | 110.88  | 111.43  | 460.0           | 37060.08                    | 0.499                    | 38.8                             | 43.7         |            |
| B-13 | #    | 19.85         | 300.1         | 111.36  | 110.45  | 485.0           | 36911.44                    | 0.538                    | 46.5                             | 50.3         |            |
| B-14 | #    | 20.30         | 300.1         | 110.99  | 111.01  | 567.5           | 36975.32                    | 0.549                    | 65.0                             | 61.6         |            |
| B-15 | #    | 18.75         | 300.0         | 111.28  | 111.12  | 550.0           | 37096.30                    | 0.505                    | 56.1                             | 43.3         |            |
| B-16 | #    | 21.60         | 300.1         | 111.81  | 111.59  | 535.0           | 37412.91                    | 0.577                    | 60.7                             | 37.1         |            |
| B-17 | #    | 16.30         | 300.1         | 110.77  | 110.96  | 580.0           | 36885.41                    | 0.442                    | 54.6                             | 48.2         |            |
| B-18 | #    | 20.80         | 300.0         | 111.19  | 111.42  | 505.0           | 37160.37                    | 0.500                    | 52.4                             | 43.5         |            |
| B-19 | #    | 22.15         | 300.1         | 112.07  | 111.49  | 480.0           | 37496.55                    | 0.591                    | 50.0                             | 46.9         |            |
| B-20 | #    | 21.90         | 300.2         | 111.61  | 111.93  | 485.0           | 37502.51                    | 0.584                    | 50.5                             | 41.1         |            |
| B-21 | #    | 20.60         | 300.2         | 111.90  | 111.34  | 532.5           | 37401.76                    | 0.551                    | 57.4                             | 37.9         |            |
| B-22 | #    | 21.15         | 300.2         | 112.21  | 112.58  | 600.0           | 37923.07                    | 0.558                    | 73.8                             | 41.2         |            |
| B-23 | #    | 20.25         | 300.1         | 111.10  | 111.08  | 495.0           | 37035.30                    | 0.547                    | 49.2                             | 33.8         |            |
| B-24 | #    | 21.00         | 300.2         | 111.69  | 111.60  | 505.0           | 37418.74                    | 0.561                    | 52.6                             | 40.7         |            |
| B-25 | #    | 20.80         | 300.0         | 111.91  | 111.40  | 480.0           | 37400.32                    | 0.556                    | 47.0                             | 58.0         |            |
| B-26 | #    | 19.10         | 300.2         | 111.20  | 111.24  | 560.0           | 37134.40                    | 0.514                    | 59.3                             | 54.1         |            |
| B-27 | #    | 22.40         | 300.0         | 112.58  | 111.99  | 542.5           | 37923.50                    | 0.592                    | 64.0                             | 51.1         |            |
| B-28 | #    | 21.95         | 300.1         | 111.20  | 111.42  | 500.0           | 37182.10                    | 0.590                    | 51.2                             | 43.6         |            |
| B-29 | #    | 20.20         | 300.2         | 111.80  | 112.61  | 595.0           | 37794.57                    | 0.534                    | 69.6                             | 37.3         |            |
| B-30 | #    | 17.50         | 300.2         | 111.36  | 111.22  | 545.0           | 37181.15                    | 0.471                    | 51.4                             | 35.8         |            |
| B-31 | #    | 16.35         | 300.1         | 110.95  | 110.42  | 562.5           | 36765.55                    | 0.445                    | 51.7                             | 41.9         |            |
| B-32 | #    | 16.65         | 300.2         | 111.03  | 110.85  | 555.0           | 36947.04                    | 0.424                    | 48.0                             | 48.2         |            |
| B-33 | #    | 18.90         | 300.1         | 111.22  | 111.36  | 465.0           | 37168.76                    | 0.508                    | 40.4                             | 41.0         |            |
| B-34 | #    | 19.35         | 300.1         | 111.35  | 111.12  | 525.0           | 37132.01                    | 0.521                    | 52.8                             | 43.6         |            |
| B-35 | #    | 21.00         | 300.0         | 111.93  | 111.59  | 500.0           | 37470.81                    | 0.560                    | 51.4                             | 40.3         |            |
| B-36 | #    | 15.75         | 300.2         | 110.97  | 110.95  | 555.0           | 36960.99                    | 0.425                    | 48.2                             | 34.1         |            |
| B-37 | #    | 17.80         | 300.0         | 111.04  | 110.74  | 570.0           | 36889.71                    | 0.483                    | 57.8                             | 35.8         |            |
| B-38 | #    | 23.40         | 300.0         | 112.16  | 112.43  | 510.0           | 37830.45                    | 0.619                    | 59.1                             | 49.6         |            |
| B-39 | #    | 24.40         | 300.2         | 111.97  | 112.85  | 600.0           | 37704.65                    | 0.646                    | 59.4                             | 54.7         |            |
| B-40 | #    | 21.15         | 300.1         | 112.80  | 111.30  | 545.0           | 37676.47                    | 0.561                    | 61.2                             | 46.7         |            |
| B-41 | #    | 22.00         | 300.1         | 111.13  | 111.69  | 535.0           | 37248.74                    | 0.591                    | 62.1                             | 51.5         |            |
| B-42 | #    | 25.55         | 300.2         | 111.74  | 112.13  | 480.0           | 37613.28                    | 0.679                    | 57.5                             | 61.5         |            |
| B-43 | #    | 19.85         | 300.1         | 111.57  | 111.76  | 557.5           | 37419.66                    | 0.530                    | 60.6                             | 50.4         |            |
| B-44 | #    | 17.25         | 300.0         | 111.25  | 110.37  | 615.0           | 36839.30                    | 0.468                    | 45.6                             | 29.5         |            |
| B-45 | #    | 18.30         | 300.1         | 112.14  | 111.46  | 485.0           | 37516.60                    | 0.485                    | 42.1                             | 35.2         |            |
| B-46 | #    | 22.90         | 300.2         | 115.48  | 115.41  | 500.0           | 40078.50                    | 0.596                    | 54.8                             | 39.5         |            |
| B-47 | #    | 21.40         | 300.1         | 111.53  | 111.31  | 470.0           | 37255.63                    | 0.574                    | 46.6                             | 39.0         |            |
| B-48 | #    | 20.55         | 300.1         | 112.40  | 110.94  | 532.5           | 37421.44                    | 0.549                    | 57.2                             | 37.1         |            |
| B-49 | #    | 17.30         | 300.2         | 110.96  | 111.33  | 470.0           | 37084.24                    | 0.467                    | 37.9                             | 31.3         |            |
| 平均   |      |               |               |         |         |                 |                             |                          | 55.0                             | 45.5         |            |



H16-② (乾燥後)

| NO.  | 品 種  | 重 量<br>W (kg) | 材 長<br>L (cm) | 寸 法     |         | 基本振動数<br>f (Hz) | 材 積<br>V (cm <sup>3</sup> ) | 密 度<br>g/cm <sup>3</sup> | ヤング係数<br>E (t/f/cm <sup>2</sup> ) | 試験片重<br>前 (g) | 試験片重<br>後 (g) | 全乾法での<br>含水率 (%) | 表面割れ<br>(cm <sup>2</sup> ) | 内部割れ<br>(mm <sup>2</sup> ) |
|------|------|---------------|---------------|---------|---------|-----------------|-----------------------------|--------------------------|-----------------------------------|---------------|---------------|------------------|----------------------------|----------------------------|
|      |      |               |               | 封幅 (mm) | 材径 (mm) |                 |                             |                          |                                   |               |               |                  |                            |                            |
| B-1  | 指定なし | 15.15         | 300.0         | 108.58  | 108.71  | 695.0           | 35411.20                    | 0.428                    | 75.9                              | 85.12         | 77.93         | 9.2              | 6.9                        | 49.2                       |
| B-2  | #    | 16.95         | 299.8         | 108.09  | 109.59  | 627.5           | 35513.06                    | 0.449                    | 64.8                              | 100.37        | 91.88         | 9.2              | 1.8                        | 88.4                       |
| B-3  | #    | 18.30         | 299.8         | 108.76  | 108.67  | 590.0           | 35433.21                    | 0.516                    | 65.9                              | 99.49         | 89.77         | 10.8             | 4.9                        | 32.9                       |
| B-4  | #    | 14.75         | 299.8         | 108.08  | 108.04  | 677.5           | 35007.54                    | 0.421                    | 51.5                              | 90.93         | 83.10         | 9.4              | 1.5                        | 0.0                        |
| B-5  | #    | 15.40         | 300.1         | 108.62  | 108.82  | 700.0           | 35471.91                    | 0.434                    | 78.1                              | 98.67         | 90.68         | 8.8              | 2.7                        | 9.3                        |
| B-6  | #    | 14.40         | 300.0         | 107.50  | 107.47  | 652.5           | 34659.08                    | 0.415                    | 64.2                              | 82.48         | 75.91         | 8.7              | 0.6                        | 0.0                        |
| B-7  | #    | 16.35         | 300.0         | 109.09  | 108.44  | 682.5           | 35489.16                    | 0.461                    | 78.8                              | 90.87         | 81.08         | 11.3             | 5.6                        | 0.0                        |
| B-8  | #    | 16.80         | 299.8         | 107.54  | 108.21  | 602.5           | 34887.44                    | 0.476                    | 63.3                              | 93.73         | 84.92         | 10.4             | 0.9                        | 5.4                        |
| B-9  | #    | 15.50         | 300.0         | 108.34  | 109.03  | 642.5           | 35436.93                    | 0.437                    | 66.3                              | 101.68        | 92.61         | 9.8              | 0.7                        | 0.7                        |
| B-10 | #    | 13.90         | 299.9         | 111.88  | 111.70  | 737.5           | 37478.49                    | 0.371                    | 74.0                              | 69.67         | 64.01         | 8.8              | 4.7                        | 17.3                       |
| B-11 | #    | 18.95         | 300.2         | 110.93  | 110.72  | 617.5           | 36871.67                    | 0.514                    | 72.0                              | 92.97         | 76.99         | 20.8             | 81.6                       | 70.9                       |
| B-12 | #    | 14.15         | 299.4         | 107.69  | 107.54  | 550.0           | 34673.46                    | 0.408                    | 45.1                              | 77.11         | 70.18         | 9.9              | 0.0                        | 6.3                        |
| B-13 | #    | 14.55         | 299.6         | 108.62  | 107.80  | 585.0           | 35080.87                    | 0.415                    | 52.0                              | 87.66         | 79.57         | 10.2             | 0.0                        | 0.9                        |
| B-14 | #    | 13.65         | 300.0         | 107.63  | 108.18  | 712.5           | 34930.24                    | 0.391                    | 72.8                              | 77.68         | 71.48         | 8.7              | 1.5                        | 5.6                        |
| B-15 | #    | 14.30         | 299.9         | 108.41  | 108.18  | 672.5           | 35171.66                    | 0.407                    | 67.5                              | 76.56         | 70.07         | 9.3              | 0.0                        | 15.8                       |
| B-16 | #    | 17.35         | 300.0         | 109.53  | 109.03  | 637.5           | 35826.17                    | 0.484                    | 72.3                              | 91.89         | 83.45         | 10.1             | 1.1                        | 32.7                       |
| B-17 | #    | 11.95         | 299.9         | 107.81  | 108.14  | 707.5           | 34964.06                    | 0.342                    | 62.8                              | 73.62         | 67.74         | 8.7              | 0.9                        | 1.4                        |
| B-18 | #    | 16.00         | 299.8         | 108.22  | 107.93  | 665.0           | 35017.19                    | 0.457                    | 61.3                              | 91.06         | 82.49         | 10.4             | 0.6                        | 62.7                       |
| B-19 | #    | 16.65         | 299.7         | 109.94  | 108.45  | 577.5           | 35440.69                    | 0.470                    | 57.4                              | 95.40         | 86.45         | 10.4             | 0.4                        | 59.3                       |
| B-20 | #    | 17.20         | 299.9         | 108.47  | 108.80  | 585.0           | 35392.81                    | 0.488                    | 61.0                              | 97.87         | 88.34         | 10.8             | 0.7                        | 17.2                       |
| B-21 | #    | 16.30         | 300.0         | 108.66  | 107.64  | 637.5           | 35088.49                    | 0.465                    | 69.3                              | 108.75        | 99.66         | 9.1              | 0.4                        | 129.1                      |
| B-22 | #    | 16.20         | 300.2         | 108.47  | 109.42  | 727.5           | 35630.10                    | 0.455                    | 88.5                              | 103.88        | 96.03         | 8.2              | 19.1                       | 25.8                       |
| B-23 | #    | 16.60         | 299.7         | 107.76  | 108.29  | 587.5           | 34972.98                    | 0.475                    | 60.0                              | 81.95         | 74.69         | 9.7              | 0.1                        | 108.7                      |
| B-24 | #    | 15.60         | 299.6         | 108.46  | 107.95  | 625.0           | 35077.94                    | 0.445                    | 63.6                              | 78.30         | 71.84         | 9.0              | 0.0                        | 39.6                       |
| B-25 | #    | 14.30         | 300.0         | 108.63  | 107.85  | 612.5           | 35147.24                    | 0.407                    | 56.0                              | 83.89         | 77.23         | 8.6              | 0.0                        | 81.0                       |
| B-26 | #    | 13.60         | 299.9         | 108.10  | 108.77  | 700.0           | 35262.35                    | 0.386                    | 69.3                              | 98.98         | 89.55         | 9.7              | 0.0                        | 70.7                       |
| B-27 | #    | 16.20         | 300.1         | 109.27  | 108.25  | 672.5           | 35497.26                    | 0.466                    | 75.8                              | 96.82         | 88.62         | 9.3              | 2.6                        | 18.0                       |
| B-28 | #    | 16.75         | 299.9         | 108.21  | 108.58  | 605.0           | 35236.58                    | 0.475                    | 63.8                              | 99.06         | 90.37         | 9.6              | 0.7                        | 24.4                       |
| B-29 | #    | 16.20         | 300.0         | 108.73  | 109.97  | 700.0           | 35871.11                    | 0.462                    | 81.2                              | 107.65        | 97.77         | 10.1             | 11.4                       | 8.2                        |
| B-30 | #    | 14.60         | 300.0         | 107.87  | 108.47  | 655.0           | 35090.28                    | 0.399                    | 62.8                              | 83.43         | 76.81         | 8.6              | 2.2                        | 21.2                       |
| B-31 | #    | 12.50         | 300.0         | 107.88  | 107.46  | 680.0           | 34778.35                    | 0.359                    | 61.0                              | 95.63         | 88.18         | 8.4              | 0.0                        | 39.0                       |
| B-32 | #    | 11.45         | 299.8         | 108.15  | 108.05  | 682.5           | 35033.45                    | 0.327                    | 55.8                              | 66.58         | 61.40         | 8.4              | 0.0                        | 0.0                        |
| B-33 | #    | 14.60         | 299.6         | 107.83  | 107.19  | 565.0           | 34628.66                    | 0.422                    | 49.3                              | 92.78         | 84.83         | 9.4              | 0.3                        | 9.6                        |
| B-34 | #    | 14.80         | 299.9         | 108.42  | 107.72  | 632.5           | 35026.33                    | 0.423                    | 62.0                              | 91.58         | 83.37         | 9.8              | 0.0                        | 0.0                        |
| B-35 | #    | 16.55         | 299.6         | 109.26  | 108.88  | 585.0           | 35641.10                    | 0.464                    | 58.2                              | 107.94        | 97.64         | 10.5             | 0.0                        | 33.9                       |
| B-36 | #    | 12.75         | 299.8         | 108.47  | 107.95  | 660.0           | 35104.59                    | 0.363                    | 58.0                              | 72.80         | 67.06         | 8.6              | 0.3                        | 0.0                        |
| B-37 | #    | 14.25         | 299.9         | 108.21  | 107.79  | 677.5           | 34980.20                    | 0.407                    | 68.6                              | 76.47         | 70.33         | 8.7              | 0.1                        | 13.5                       |
| B-38 | #    | 17.25         | 299.9         | 109.28  | 109.27  | 620.0           | 35811.14                    | 0.482                    | 67.9                              | 118.21        | 107.21        | 10.3             | 3.0                        | 118.9                      |
| B-39 | #    | 17.35         | 300.0         | 108.51  | 108.88  | 625.0           | 35346.05                    | 0.491                    | 70.4                              | 88.13         | 80.12         | 10.0             | 3.9                        | 88.6                       |
| B-40 | #    | 15.85         | 300.1         | 109.36  | 107.43  | 662.5           | 35257.38                    | 0.450                    | 72.5                              | 88.74         | 81.26         | 9.2              | 0.7                        | 3.2                        |
| B-41 | #    | 16.25         | 300.0         | 108.50  | 109.54  | 645.0           | 35655.27                    | 0.456                    | 69.6                              | 86.76         | 77.55         | 11.9             | 11.3                       | 24.7                       |
| B-42 | #    | 17.70         | 300.0         | 110.18  | 110.86  | 582.5           | 36043.66                    | 0.483                    | 69.2                              | 116.43        | 104.08        | 11.9             | 9.5                        | 6.1                        |
| B-43 | #    | 14.40         | 300.0         | 108.71  | 108.37  | 687.5           | 35342.71                    | 0.407                    | 70.7                              | 90.13         | 82.63         | 9.1              | 2.8                        | 62.8                       |
| B-44 | #    | 14.55         | 299.6         | 108.61  | 107.80  | 602.5           | 35077.64                    | 0.415                    | 55.1                              | 78.94         | 72.28         | 9.2              | 0.0                        | 0.0                        |
| B-45 | #    | 14.80         | 299.6         | 108.67  | 108.05  | 587.5           | 35178.41                    | 0.421                    | 53.2                              | 90.79         | 83.05         | 9.3              | 1.3                        | 2.9                        |
| B-46 | #    | 16.90         | 299.9         | 111.12  | 111.82  | 618.0           | 37263.89                    | 0.507                    | 69.2                              | 113.89        | 103.05        | 10.3             | 3.1                        | 17.8                       |
| B-47 | #    | 16.95         | 300.0         | 108.47  | 108.06  | 572.5           | 35183.80                    | 0.482                    | 58.0                              | 89.25         | 81.07         | 10.1             | 1.3                        | 7.9                        |
| B-48 | #    | 16.50         | 300.0         | 108.63  | 108.68  | 632.5           | 35417.73                    | 0.466                    | 68.4                              | 100.24        | 91.05         | 10.1             | 3.0                        | 65.5                       |
| B-49 | #    | 14.35         | 299.6         | 107.63  | 107.90  | 566.0           | 34793.38                    | 0.412                    | 47.4                              | 81.97         | 75.27         | 8.9              | 0.6                        | 0.0                        |
| 平均   |      |               |               |         |         |                 |                             |                          | 64.8                              |               |               | 9.8              | 4.0                        | 31.2                       |

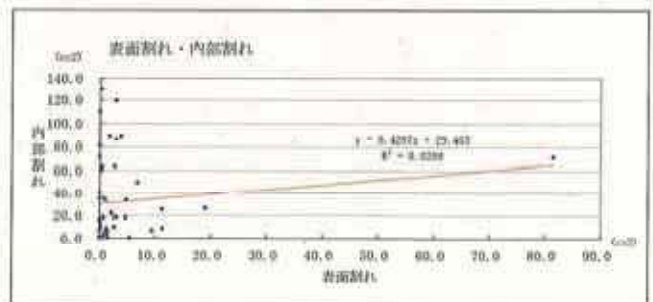
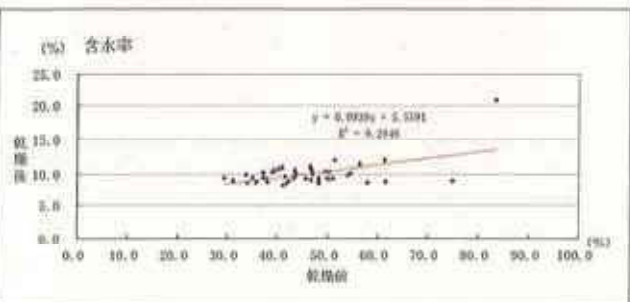
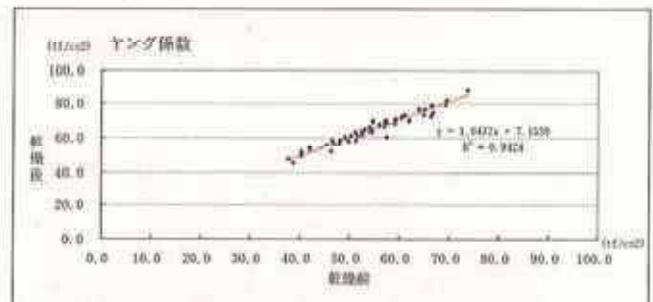
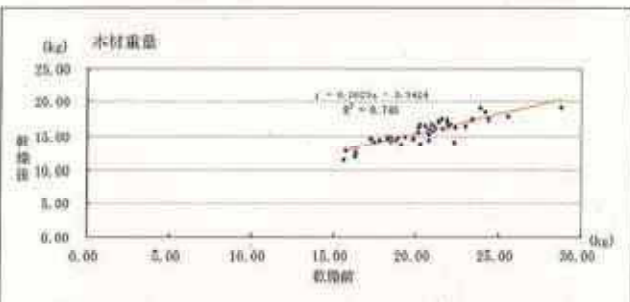
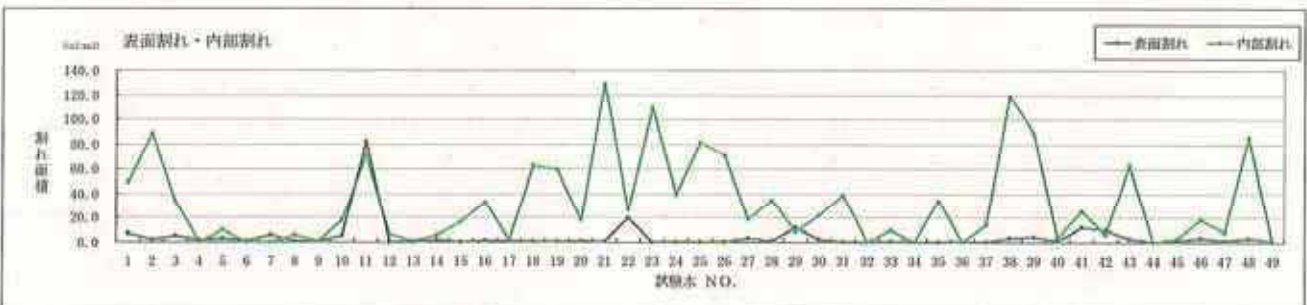
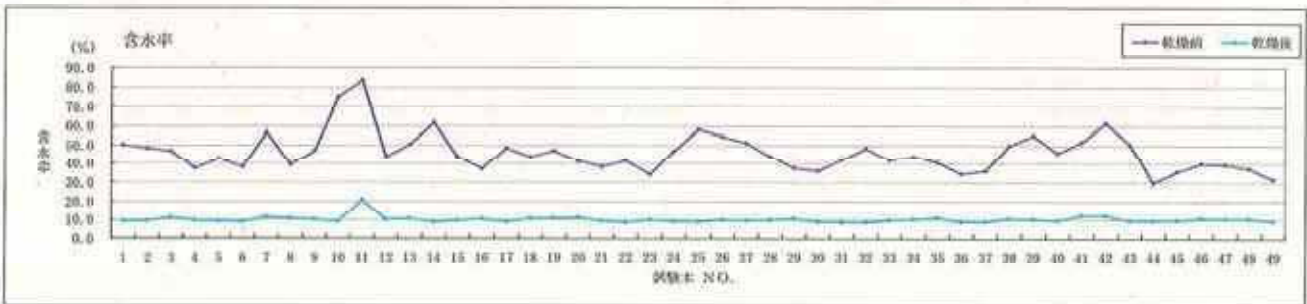
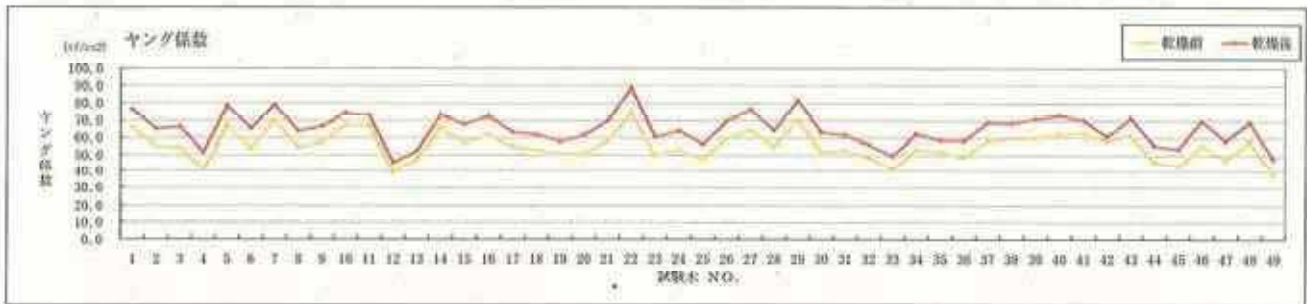
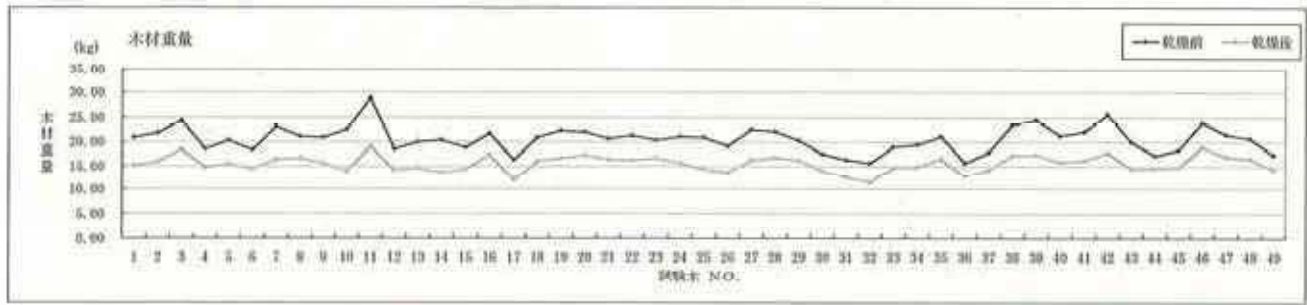


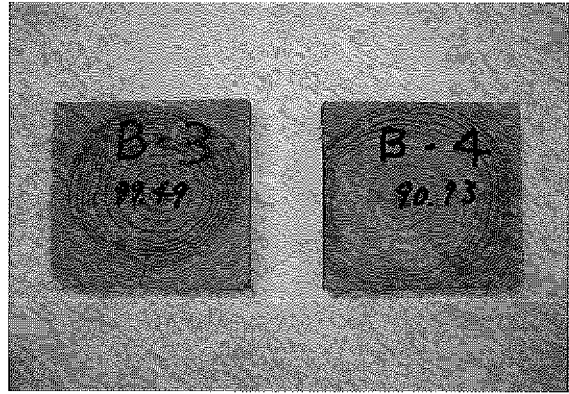
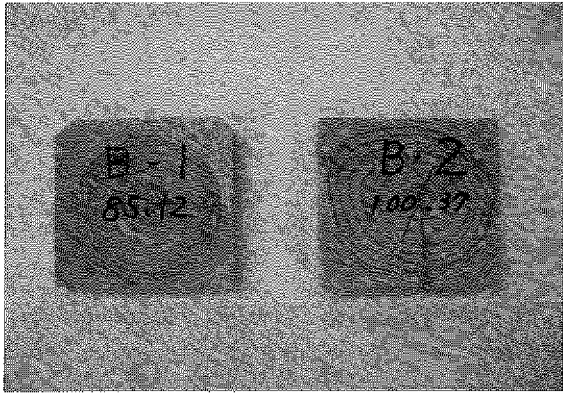
乾燥前(元口側)



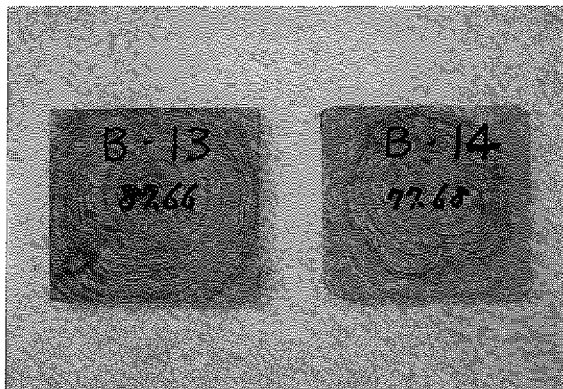
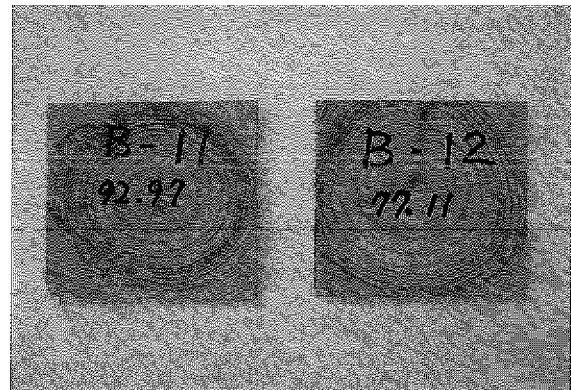
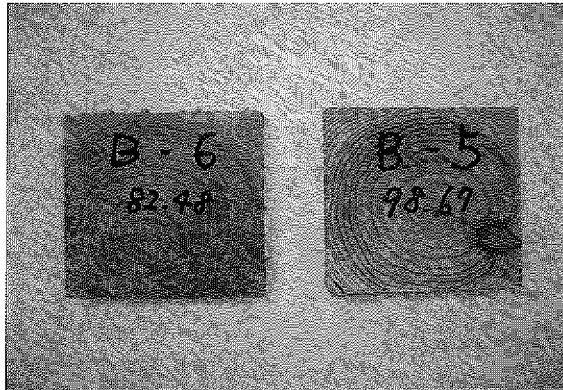
乾燥前(末口側)

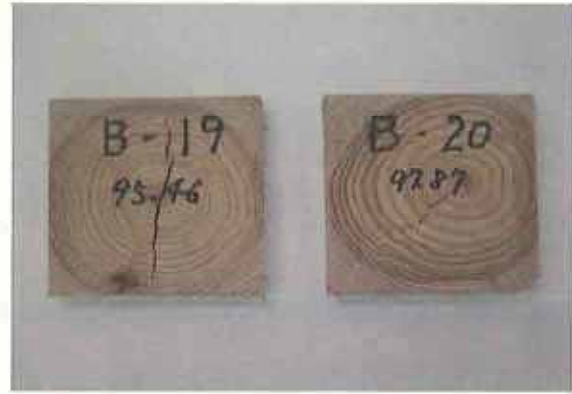




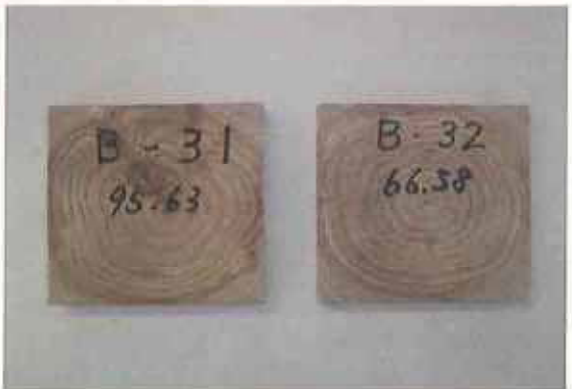
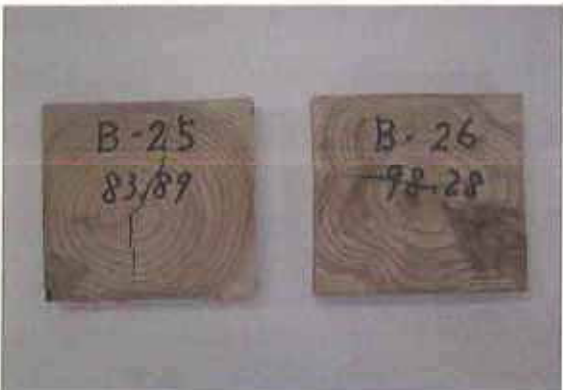
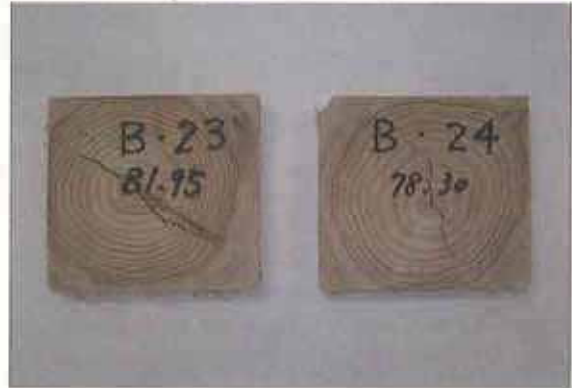
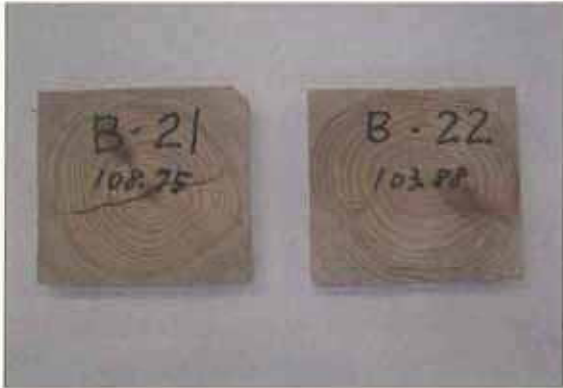


乾燥後の試験片

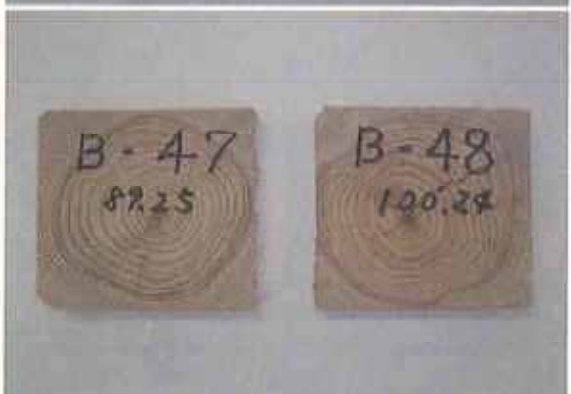
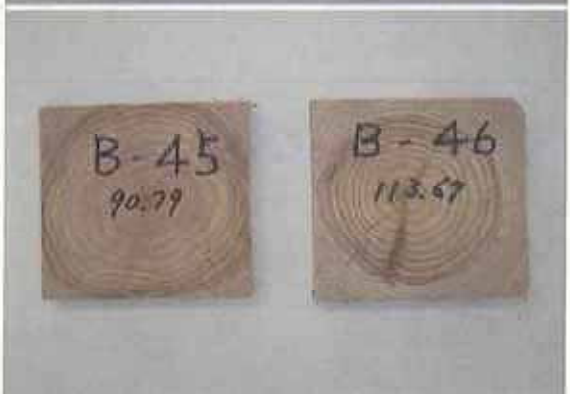
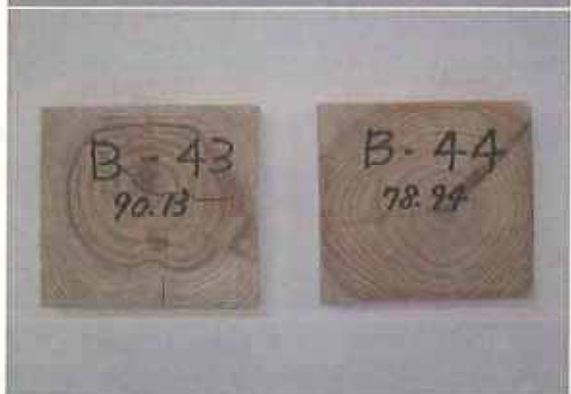
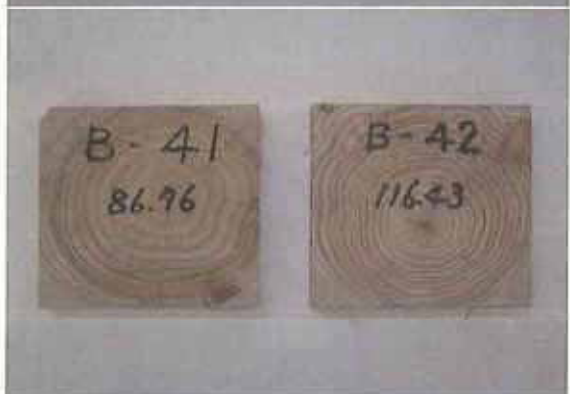
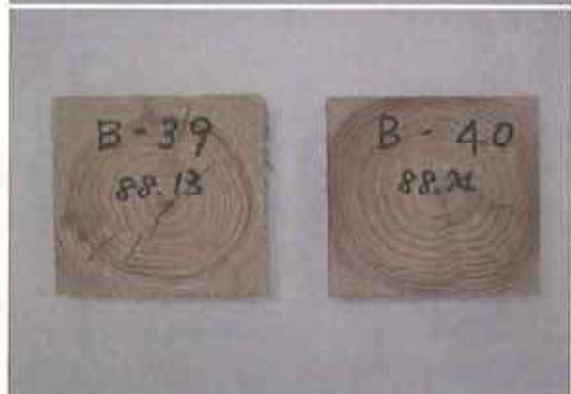




乾燥後の試験片







乾燥後の試験片

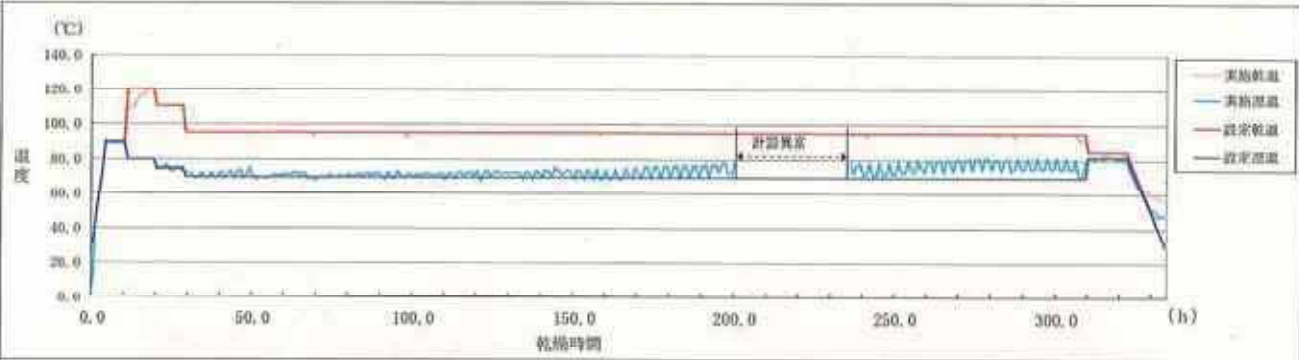
H16-③ 木材乾燥データ

■試験木データ

佐賀県産スギ (品種指定なし 20本)

規格等: L=3.0m 135mm×135mm 心持ち正角材

H16-④ 乾燥スケジュール



| 区号     | ①   | ②   | ③   | ④    | ⑤    | ⑥    | ⑦    | ⑧   | ⑨    | ⑩   | ⑪   | ⑫   | ⑬ | 乾燥時間 |
|--------|-----|-----|-----|------|------|------|------|-----|------|-----|-----|-----|---|------|
| 設定乾燥温度 | 30℃ | 90℃ | 90℃ | 120℃ | 120℃ | 110℃ | 110℃ | 95℃ | 95℃  | 85℃ | 85℃ | 30℃ |   | 334h |
| 設定目標温度 | 30℃ | 90℃ | 90℃ | 80℃  | 80℃  | 75℃  | 75℃  | 70℃ | 70℃  | 82℃ | 82℃ | 30℃ |   |      |
| 乾燥時間   | -   | 4h  | 6h  | 1h   | 8h   | 1h   | 8h   | 1h  | 280h | 1h  | 12h | 12h |   |      |

H16-⑤ (乾燥前)

| NO.  | 品 種  | 重 量<br>W(kg) | 材 長<br>L(cm) | 寸 法    |        | 基本振動数<br>f (Hz) | 材 積<br>V (cm3) | 密 度<br>ρ (cm3) | ヤング係数<br>E (tf/cm2) | 推定含水率<br>(%) | 心材色<br>腐朽等 |
|------|------|--------------|--------------|--------|--------|-----------------|----------------|----------------|---------------------|--------------|------------|
|      |      |              |              | 材幅(mm) | 材厚(mm) |                 |                |                |                     |              |            |
| C-1  | 指定なし | 41.90        | 300.1        | 136.56 | 135.78 | 482.5           | 55644.89       | 0.753          | 61.4                | 112.2        | b          |
| C-2  | "    | 31.20        | 300.2        | 135.82 | 135.08 | 635.0           | 55443.35       | 0.503          | 63.4                | 58.5         | r          |
| C-3  | "    | 33.35        | 300.0        | 135.54 | 135.62 | 502.5           | 55145.80       | 0.606          | 66.1                | 83.4         | rb         |
| C-4  | "    | 32.70        | 300.0        | 135.91 | 136.09 | 612.5           | 55487.98       | 0.589          | 81.2                | 70.0         | r          |
| C-5  | "    | 32.85        | 300.2        | 136.70 | 135.78 | 520.0           | 55720.56       | 0.590          | 58.6                | 82.9         | r          |
| C-6  | "    | 29.35        | 300.1        | 135.84 | 136.09 | 585.0           | 55477.98       | 0.529          | 66.5                | 69.0         | rb         |
| C-7  | "    | 29.10        | 300.1        | 134.76 | 134.72 | 632.5           | 54482.76       | 0.534          | 78.5                | 54.2         | r          |
| C-8  | "    | 31.85        | 300.1        | 134.72 | 134.91 | 635.0           | 54543.40       | 0.584          | 86.5                | 62.9         | r          |
| C-9  | "    | 48.80        | 300.1        | 136.19 | 135.87 | 545.0           | 55530.91       | 0.879          | 95.9                | 107.2        | b          |
| C-10 | "    | 33.65        | 300.1        | 135.69 | 135.63 | 500.0           | 55229.31       | 0.609          | 56.0                | 90.8         | rb         |
| C-11 | "    | 31.80        | 300.2        | 135.62 | 135.74 | 537.5           | 55263.99       | 0.575          | 61.1                | 66.5         | r          |
| C-12 | "    | 32.75        | 300.2        | 137.86 | 138.15 | 490.0           | 57174.17       | 0.573          | 50.6                | 37.6         | r          |
| C-13 | "    | 46.75        | 300.2        | 137.57 | 138.05 | 470.0           | 57012.60       | 0.820          | 66.6                | 101.7        | b          |
| C-14 | "    | 29.75        | 300.2        | 136.46 | 136.62 | 520.0           | 55966.78       | 0.532          | 52.8                | 42.7         | r          |
| C-15 | "    | 30.25        | 300.1        | 136.13 | 136.84 | 662.5           | 55494.19       | 0.545          | 87.9                | 47.3         | r          |
| C-16 | "    | 34.05        | 300.1        | 136.29 | 136.89 | 520.0           | 55579.86       | 0.613          | 60.9                | 92.1         | r          |
| C-17 | "    | 40.75        | 300.2        | 136.34 | 136.32 | 500.0           | 55385.49       | 0.736          | 67.6                | 100.1        | rb         |
| C-18 | "    | 38.05        | 300.1        | 136.79 | 137.04 | 547.5           | 56255.85       | 0.676          | 74.5                | 56.2         | r          |
| C-19 | "    | 34.75        | 300.1        | 135.99 | 135.73 | 617.5           | 55392.23       | 0.627          | 87.9                | 75.1         | r          |
| C-20 | "    | 39.50        | 299.6        | 135.74 | 135.63 | 420.0           | 55167.61       | 0.716          | 46.3                | 92.0         | rb         |
| 平均   |      |              |              |        |        |                 |                |                | 69.1                | 74.6         |            |

H16-⑥ (乾燥後)

| NO.  | 品 種  | 重 量<br>W(kg) | 材 長<br>L(cm) | 寸 法    |        | 基本振動数<br>f (Hz) | 材 積<br>V (cm3) | 密 度<br>ρ (cm3) | ヤング係数<br>E (tf/cm2) | 試験片重<br>前 (g) | 試験片重<br>後 (g) | 全乾法での<br>含水率 (%) | 表面割れ<br>(cm2) | 内部割れ<br>(mm2) |
|------|------|--------------|--------------|--------|--------|-----------------|----------------|----------------|---------------------|---------------|---------------|------------------|---------------|---------------|
|      |      |              |              | 材幅(mm) | 材厚(mm) |                 |                |                |                     |               |               |                  |               |               |
| C-1  | 指定なし | 23.30        | 300.0        | 132.75 | 133.24 | 655.0           | 53062.83       | 0.439          | 69.2                | 113.43        | 96.11         | 18.0             | 38.3          | 198.6         |
| C-2  | "    | 21.10        | 299.8        | 129.83 | 129.94 | 827.5           | 50576.59       | 0.417          | 104.7               | 123.46        | 115.15        | 7.2              | 5.9           | 85.0          |
| C-3  | "    | 19.75        | 299.9        | 132.69 | 131.74 | 677.5           | 52424.26       | 0.377          | 63.4                | 141.50        | 130.25        | 8.6              | 6.4           | 76.7          |
| C-4  | "    | 20.70        | 299.6        | 131.25 | 131.13 | 797.5           | 51563.59       | 0.401          | 93.5                | 123.59        | 114.87        | 7.6              | 58.5          | 104.6         |
| C-5  | "    | 19.40        | 299.9        | 129.85 | 129.70 | 715.0           | 50507.79       | 0.384          | 72.0                | 120.31        | 111.36        | 8.0              | 7.1           | 105.7         |
| C-6  | "    | 18.75        | 299.8        | 131.93 | 131.43 | 770.0           | 51984.00       | 0.361          | 78.4                | 127.65        | 118.21        | 8.0              | 2.3           | 12.9          |
| C-7  | "    | 20.20        | 299.6        | 128.51 | 128.10 | 797.5           | 49320.54       | 0.410          | 95.4                | 115.39        | 107.77        | 7.1              | 5.8           | 66.1          |
| C-8  | "    | 20.95        | 299.7        | 128.54 | 128.06 | 825.0           | 49339.11       | 0.425          | 105.9               | 120.38        | 112.36        | 7.1              | 8.2           | 214.5         |
| C-9  | "    | 27.50        | 300.0        | 133.19 | 131.57 | 737.5           | 52571.42       | 0.523          | 104.4               | 151.09        | 129.40        | 16.8             | 44.7          | 18.6          |
| C-10 | "    | 19.15        | 299.7        | 132.53 | 132.38 | 685.0           | 52580.33       | 0.364          | 62.6                | 106.68        | 98.27         | 8.6              | 3.3           | 11.8          |
| C-11 | "    | 21.80        | 299.5        | 129.71 | 129.98 | 682.5           | 50494.82       | 0.432          | 73.6                | 125.75        | 117.18        | 7.3              | 0.4           | 78.4          |
| C-12 | "    | 25.85        | 299.4        | 134.45 | 134.47 | 595.0           | 54130.00       | 0.478          | 61.8                | 152.70        | 140.63        | 8.6              | 0.2           | 115.8         |
| C-13 | "    | 25.50        | 300.0        | 133.75 | 134.48 | 642.5           | 53960.10       | 0.473          | 71.6                | 176.90        | 160.78        | 10.0             | 17.8          | 151.3         |
| C-14 | "    | 22.50        | 299.7        | 131.23 | 131.57 | 632.5           | 51746.00       | 0.435          | 63.7                | 147.06        | 136.23        | 7.9              | 0.4           | 3.5           |
| C-15 | "    | 21.95        | 299.9        | 131.15 | 131.25 | 812.5           | 51623.10       | 0.425          | 103.0               | 136.70        | 127.86        | 6.9              | 3.3           | 34.5          |
| C-16 | "    | 19.25        | 299.6        | 132.56 | 132.14 | 715.0           | 52479.37       | 0.367          | 68.7                | 117.03        | 107.75        | 8.6              | 0.0           | 4.7           |
| C-17 | "    | 22.50        | 299.5        | 132.91 | 131.98 | 682.5           | 52230.68       | 0.431          | 73.6                | 161.39        | 146.04        | 10.5             | 8.4           | 101.0         |
| C-18 | "    | 26.80        | 299.5        | 133.25 | 133.94 | 685.0           | 53453.28       | 0.501          | 86.1                | 176.69        | 160.59        | 10.0             | 28.0          | 98.3          |
| C-19 | "    | 21.30        | 299.8        | 130.37 | 129.64 | 825.0           | 50030.61       | 0.421          | 105.0               | 135.01        | 128.80        | 7.3              | 4.6           | 161.2         |
| C-20 | "    | 22.75        | 299.2        | 130.60 | 130.95 | 560.0           | 51160.39       | 0.446          | 50.9                | 128.00        | 115.76        | 10.6             | 0.1           | 333.0         |
| 平均   |      |              |              |        |        |                 |                |                | 80.4                |               |               | 9.2              | 12.1          | 99.6          |





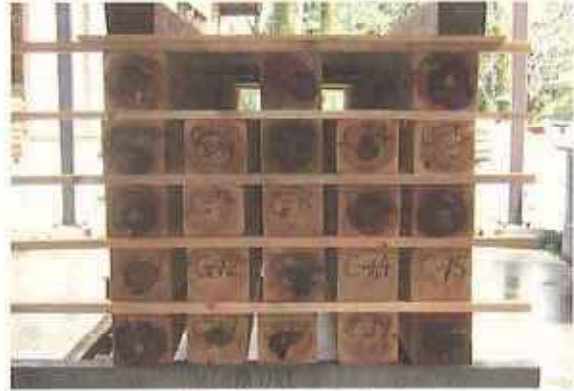
乾燥前(元口側)



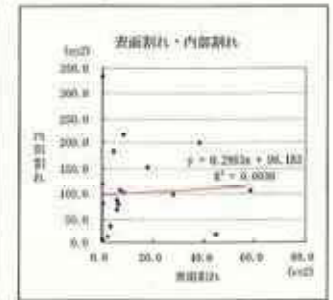
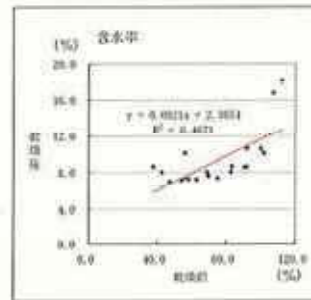
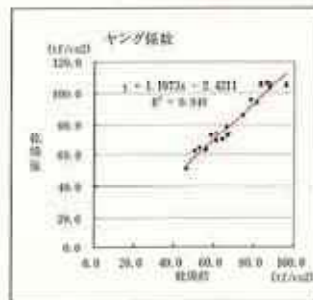
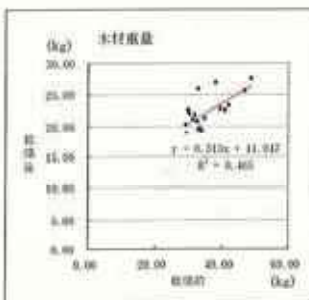
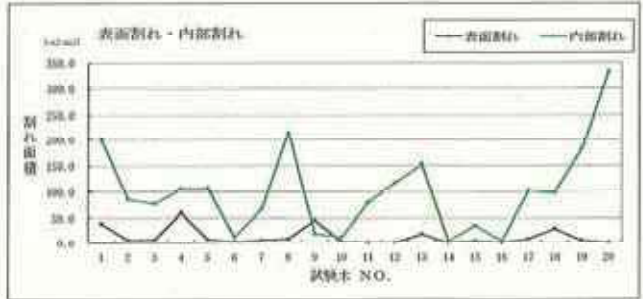
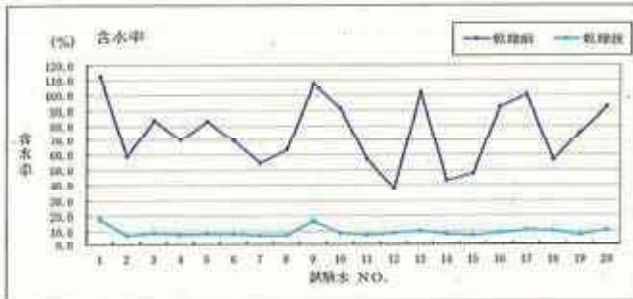
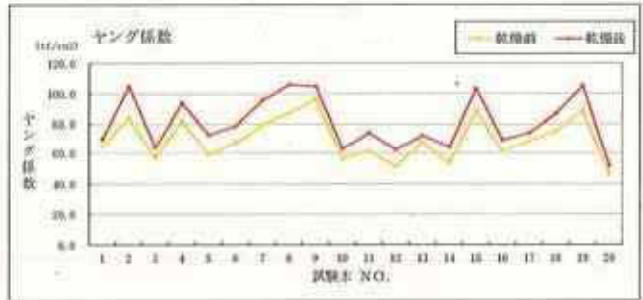
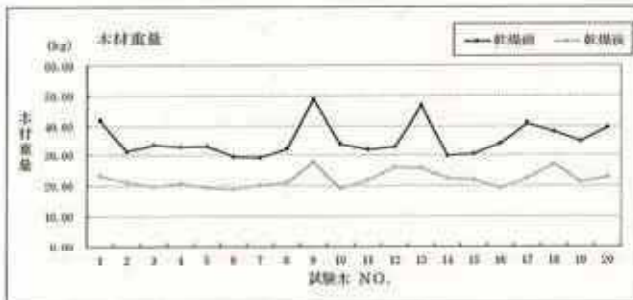
乾燥前(末口側)



乾燥後(元口側)



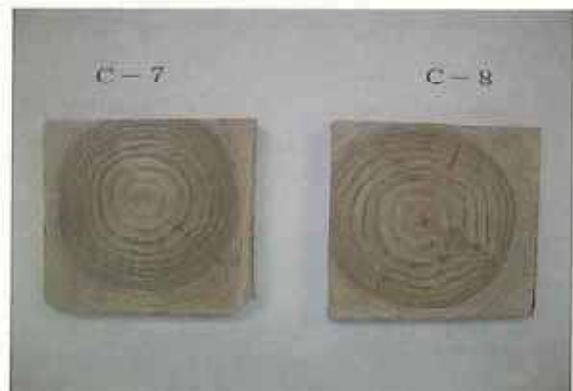
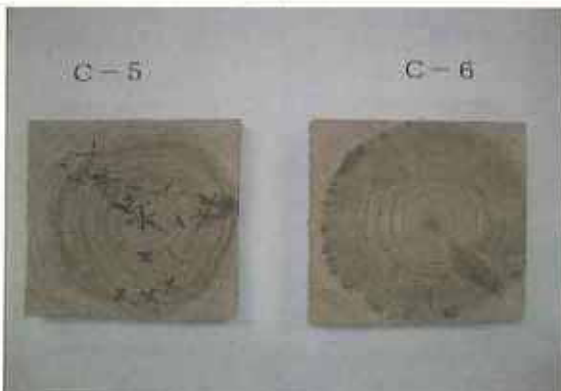
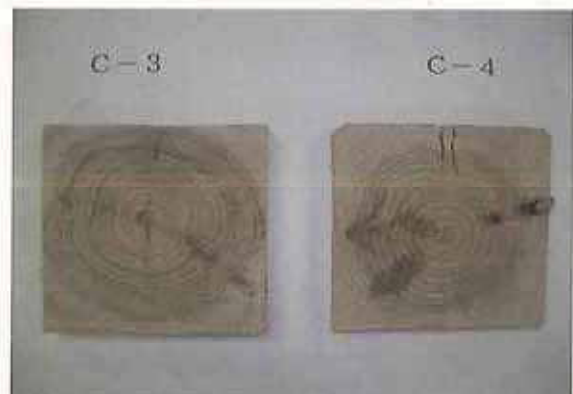
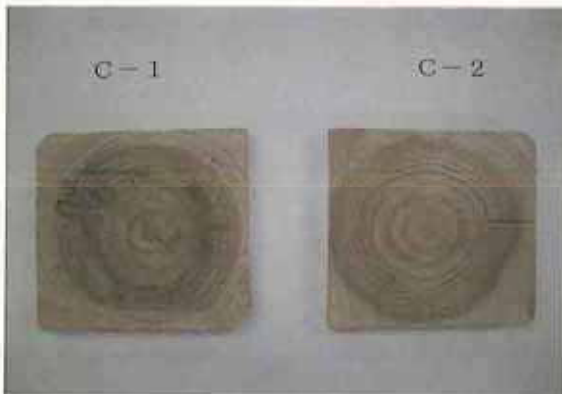
乾燥後(末口側)

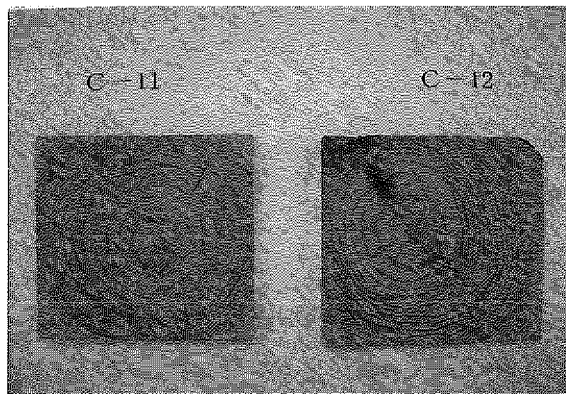
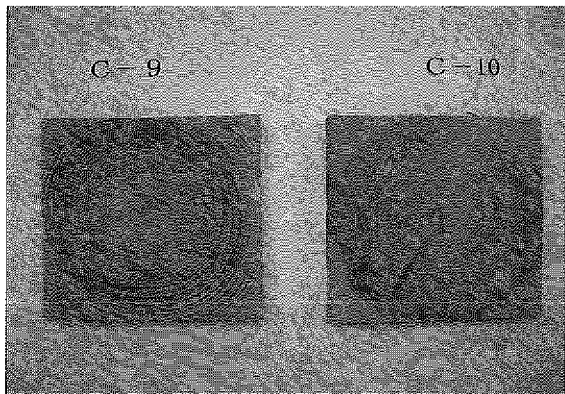




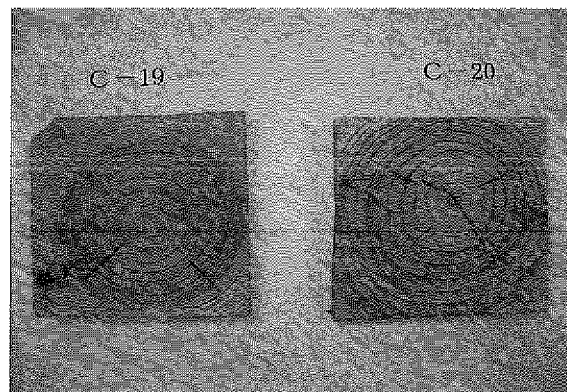
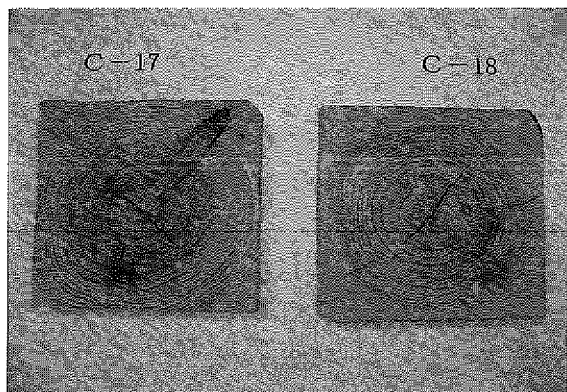
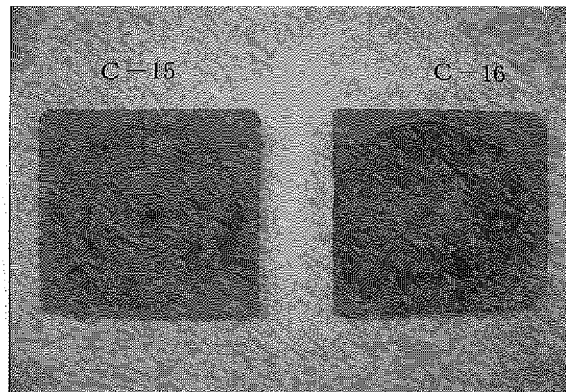
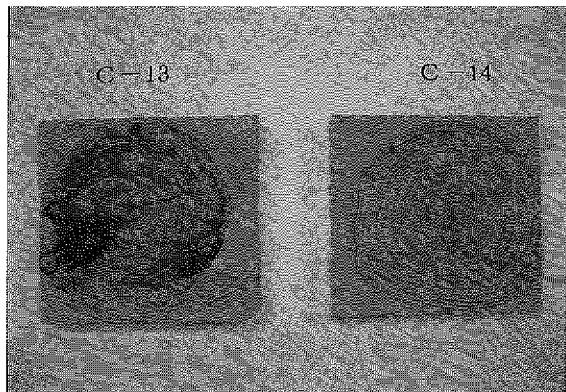


乾燥後の試験片





乾燥後の試験片





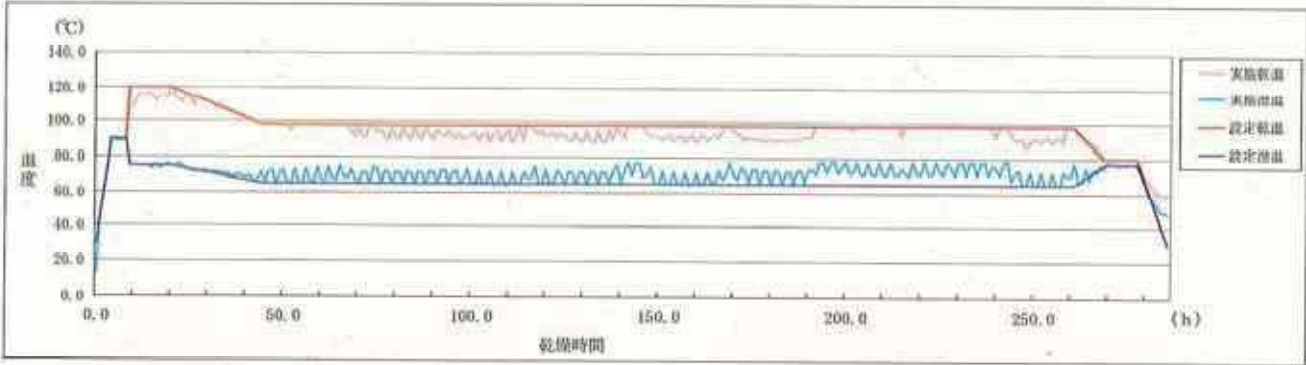
H16-④ 木材乾燥データ

■試験木データ

佐賀県産スギ (品種指定なし 20本)

規格等: L=3.0m 135mm×135mm 心持ち正角材

H14-④ 乾燥スケジュール



| 区号     | ①   | ②   | ③   | ④    | ⑤    | ⑥    | ⑦    | ⑧    | ⑨    | ⑩    | ⑪ | 乾燥時間 |
|--------|-----|-----|-----|------|------|------|------|------|------|------|---|------|
| 設定乾燥温度 | 30℃ | 90℃ | 90℃ | 120℃ | 120℃ | 98℃  | 98℃  | 80℃  | 80℃  | 30℃  |   |      |
| 設定湿度   | 30℃ | 90℃ | 90℃ | 7.5℃ | 7.5℃ | 6.5℃ | 6.5℃ | 7.7℃ | 7.7℃ | 3.0℃ |   | 266h |
| 乾燥時間   | -   | 4h  | 4h  | 1h   | 12h  | 24h  | 217h | 8h   | 8h   | 8h   |   |      |

H16-④ (乾燥前)

| NO.  | 品種   | 重量<br>W(kg) | 材長<br>L(cm) | 寸法     |         | 基本振動数<br>f (Hz) | 材積<br>V (cm <sup>3</sup> ) | 密度<br>g/cm <sup>3</sup> | ヤング係数<br>E (tf/cm <sup>2</sup> ) | 推定含水率<br>(%) | 心材色<br>判定等 |
|------|------|-------------|-------------|--------|---------|-----------------|----------------------------|-------------------------|----------------------------------|--------------|------------|
|      |      |             |             | 材幅(mm) | 材せい(mm) |                 |                            |                         |                                  |              |            |
| D-1  | 指定なし | 48.70       | 300.0       | 134.81 | 135.45  | 475.0           | 54780.04                   | 0.889                   | 73.6                             | 134.5        | b          |
| D-2  | #    | 31.20       | 300.2       | 134.65 | 135.71  | 495.0           | 54856.60                   | 0.569                   | 51.2                             | 43.2         | r          |
| D-3  | #    | 37.80       | 300.0       | 135.56 | 136.15  | 542.5           | 55369.48                   | 0.683                   | 73.8                             | 49.3         | r          |
| D-4  | #    | 31.55       | 300.2       | 135.97 | 134.60  | 380.0           | 54941.29                   | 0.574                   | 30.5                             | 74.9         | r          |
| D-5  | #    | 48.10       | 300.1       | 135.42 | 135.31  | 510.0           | 54989.36                   | 0.875                   | 83.6                             | 118.6        | b          |
| D-6  | #    | 31.25       | 300.2       | 134.93 | 135.79  | 485.0           | 55003.08                   | 0.568                   | 49.1                             | 62.9         | rb         |
| D-7  | #    | 35.65       | 300.2       | 135.28 | 136.09  | 547.5           | 55231.04                   | 0.645                   | 71.1                             | 89.1         | r          |
| D-8  | #    | 36.90       | 300.1       | 134.99 | 134.62  | 557.5           | 54535.23                   | 0.677                   | 77.3                             | 91.1         | r          |
| D-9  | #    | 35.55       | 300.2       | 135.73 | 135.92  | 632.5           | 55382.10                   | 0.942                   | 66.9                             | 69.6         | rb         |
| D-10 | #    | 29.70       | 300.2       | 134.91 | 134.93  | 520.0           | 54646.83                   | 0.543                   | 55.9                             | 66.7         | rb         |
| D-11 | #    | 42.50       | 300.1       | 135.98 | 135.28  | 520.0           | 54820.98                   | 0.775                   | 77.0                             | 98.9         | rb         |
| D-12 | #    | 35.75       | 300.1       | 135.26 | 135.44  | 522.5           | 54977.16                   | 0.650                   | 65.2                             | 66.5         | rb         |
| D-13 | #    | 28.70       | 300.2       | 135.06 | 134.92  | 500.0           | 5503.13                    | 5.215                   | 48.2                             | 73.0         | rb         |
| D-14 | #    | 29.75       | 300.2       | 135.76 | 136.07  | 465.0           | 55455.54                   | 0.536                   | 42.6                             | 46.3         | rb         |
| D-15 | #    | 29.25       | 300.1       | 135.95 | 134.84  | 490.0           | 55012.83                   | 0.532                   | 46.9                             | 70.1         | b          |
| D-16 | #    | 35.50       | 300.2       | 135.89 | 135.46  | 440.0           | 55137.80                   | 0.644                   | 45.8                             | 73.0         | rb         |
| D-17 | #    | 35.15       | 300.1       | 135.60 | 135.06  | 545.0           | 54960.72                   | 0.640                   | 69.8                             | 50.5         | r          |
| D-18 | #    | 34.60       | 300.1       | 135.37 | 135.98  | 560.0           | 55241.25                   | 0.626                   | 72.2                             | 45.1         | rb         |
| D-19 | #    | 36.40       | 300.1       | 135.53 | 135.45  | 585.0           | 55090.97                   | 0.661                   | 83.1                             | 81.1         | rb         |
| D-20 | #    | 29.45       | 300.1       | 134.35 | 135.63  | 490.0           | 54643.67                   | 0.539                   | 47.5                             | 89.8         | b          |
| 平均   |      |             |             |        |         |                 |                            |                         | 61.6                             | 74.2         |            |

H16-④ (乾燥後)

| NO.  | 品種   | 重量<br>W(kg) | 材長<br>L(cm) | 寸法     |         | 基本振動数<br>f (Hz) | 材積<br>V (cm <sup>3</sup> ) | 密度<br>g/cm <sup>3</sup> | ヤング係数<br>E (tf/cm <sup>2</sup> ) | 試験片重<br>前 (g) | 試験片重<br>後 (g) | 全乾法での<br>含水率(%) | 表面割れ<br>(cm <sup>2</sup> ) | 内部割れ<br>(mm <sup>2</sup> ) |
|------|------|-------------|-------------|--------|---------|-----------------|----------------------------|-------------------------|----------------------------------|---------------|---------------|-----------------|----------------------------|----------------------------|
|      |      |             |             | 材幅(mm) | 材せい(mm) |                 |                            |                         |                                  |               |               |                 |                            |                            |
| D-1  | 指定なし | 25.85       | 300.0       | 133.29 | 134.26  | 655.0           | 53680.55                   | 0.481                   | 75.8                             | 136.94        | 100.23        | 24.5            | 2.9                        | 11.9                       |
| D-2  | #    | 23.50       | 299.3       | 131.76 | 132.15  | 605.0           | 52114.37                   | 0.451                   | 60.3                             | 172.60        | 160.04        | 7.8             | 1.0                        | 57.4                       |
| D-3  | #    | 27.25       | 299.7       | 130.51 | 131.52  | 672.5           | 51442.53                   | 0.530                   | 87.8                             | 185.14        | 172.01        | 7.6             | 23.6                       | 76.9                       |
| D-4  | #    | 19.40       | 299.4       | 131.66 | 130.74  | 537.5           | 51644.33                   | 0.376                   | 39.8                             | 136.84        | 127.24        | 7.5             | 3.1                        | 77.9                       |
| D-5  | #    | 25.50       | 300.0       | 132.49 | 132.75  | 725.0           | 52764.14                   | 0.483                   | 93.3                             | 159.15        | 137.31        | 15.9            | 119.9                      | 126.2                      |
| D-6  | #    | 20.80       | 299.7       | 130.85 | 132.44  | 645.0           | 51937.33                   | 0.400                   | 61.0                             | 130.89        | 120.74        | 8.4             | 14.4                       | 74.2                       |
| D-7  | #    | 22.60       | 300.0       | 132.70 | 133.94  | 705.0           | 53321.51                   | 0.424                   | 77.3                             | 135.96        | 113.44        | 19.9            | 26.8                       | 5.4                        |
| D-8  | #    | 22.50       | 300.0       | 133.66 | 132.06  | 740.0           | 52953.42                   | 0.425                   | 85.4                             | 110.86        | 95.12         | 16.6            | 81.3                       | 41.2                       |
| D-9  | #    | 22.65       | 299.8       | 132.03 | 132.57  | 695.0           | 52474.64                   | 0.432                   | 70.4                             | 121.64        | 112.48        | 8.1             | 76.6                       | 54.4                       |
| D-10 | #    | 19.10       | 299.6       | 131.90 | 132.05  | 692.5           | 52182.52                   | 0.366                   | 64.3                             | 124.68        | 116.33        | 7.2             | 1.1                        | 11.1                       |
| D-11 | #    | 25.25       | 300.0       | 133.14 | 132.99  | 677.5           | 53118.87                   | 0.475                   | 80.1                             | 160.16        | 135.45        | 18.2            | 107.8                      | 43.1                       |
| D-12 | #    | 24.85       | 299.8       | 132.29 | 132.62  | 665.0           | 52597.81                   | 0.472                   | 70.6                             | 134.85        | 123.96        | 8.8             | 33.7                       | 44.5                       |
| D-13 | #    | 17.70       | 299.6       | 131.86 | 132.08  | 672.5           | 52099.83                   | 0.340                   | 56.3                             | 111.58        | 104.58        | 6.7             | 1.7                        | 29.9                       |
| D-14 | #    | 22.00       | 299.6       | 132.16 | 132.69  | 567.5           | 52538.79                   | 0.419                   | 49.4                             | 143.56        | 132.68        | 8.2             | 0.9                        | 26.6                       |
| D-15 | #    | 18.30       | 299.8       | 131.16 | 129.58  | 675.0           | 50953.15                   | 0.359                   | 60.0                             | 135.72        | 127.55        | 6.4             | 4.6                        | 162.4                      |
| D-16 | #    | 22.16       | 300.0       | 131.89 | 132.91  | 592.5           | 52588.50                   | 0.421                   | 54.3                             | 133.80        | 124.01        | 8.0             | 12.5                       | 227.1                      |
| D-17 | #    | 25.60       | 299.7       | 131.48 | 131.05  | 682.5           | 51630.67                   | 0.484                   | 82.6                             | 161.93        | 161.31        | 7.1             | 12.1                       | 214.4                      |
| D-18 | #    | 25.45       | 299.9       | 131.16 | 132.24  | 682.5           | 52016.45                   | 0.497                   | 84.9                             | 163.00        | 150.38        | 8.4             | 13.0                       | 34.6                       |
| D-19 | #    | 23.20       | 300.0       | 133.60 | 133.28  | 760.0           | 53418.62                   | 0.434                   | 92.1                             | 159.26        | 138.01        | 15.4            | 46.7                       | 48.7                       |
| D-20 | #    | 16.70       | 299.5       | 131.39 | 132.08  | 677.5           | 51975.20                   | 0.321                   | 54.0                             | 122.70        | 113.99        | 7.6             | 1.2                        | 10.5                       |
| 平均   |      |             |             |        |         |                 |                            |                         | 70.6                             |               |               | 10.9            | 28.9                       | 68.9                       |





乾燥前(元口側)



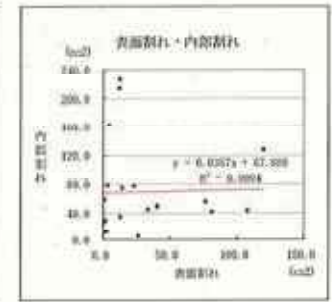
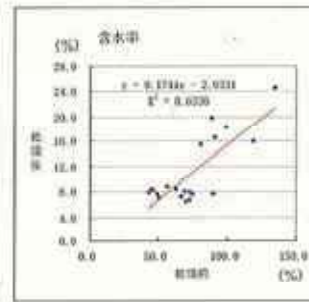
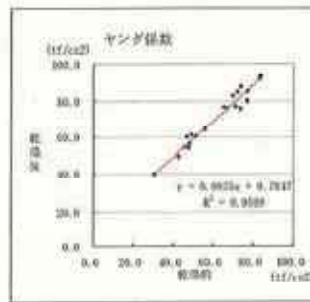
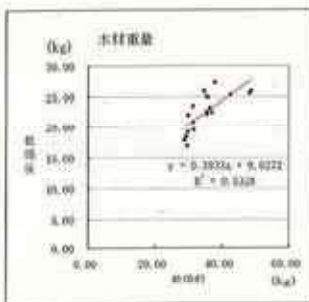
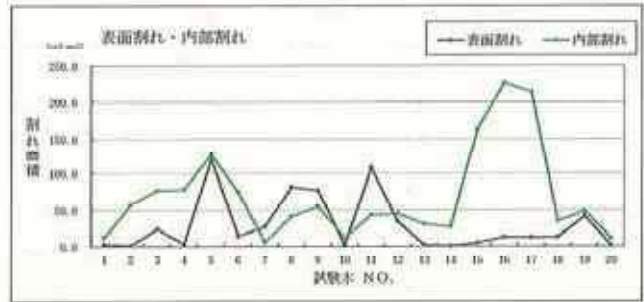
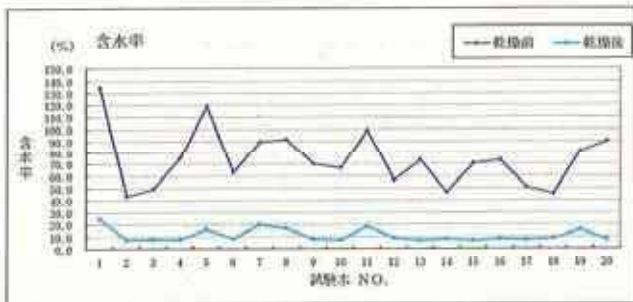
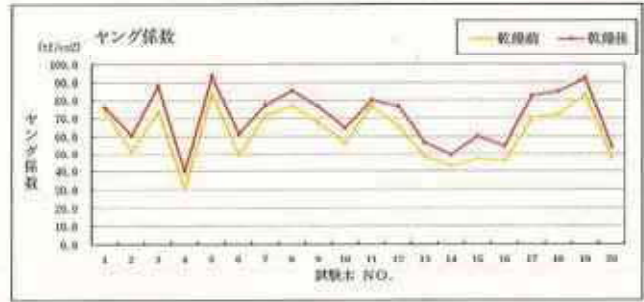
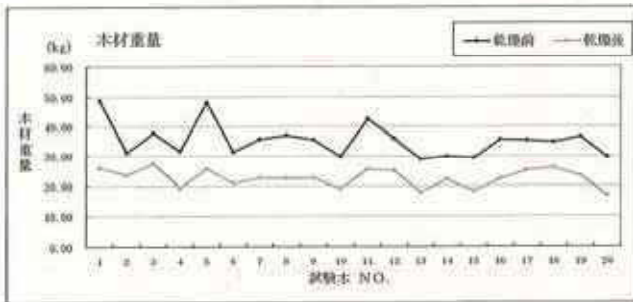
乾燥前(末口側)



乾燥後(元口側)

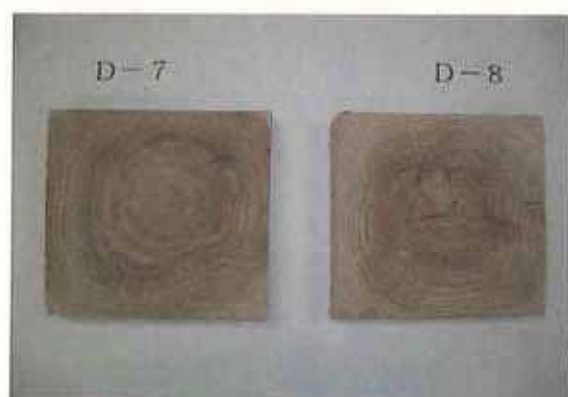
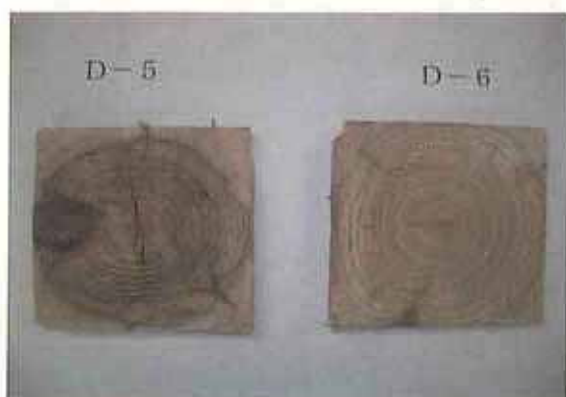
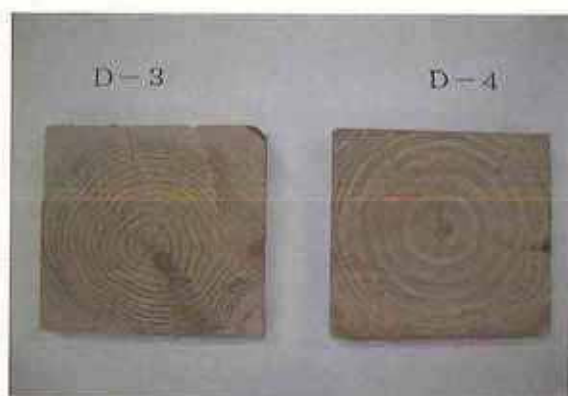
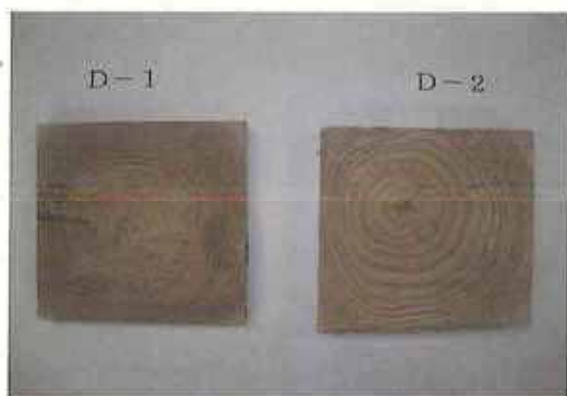


乾燥後(末口側)

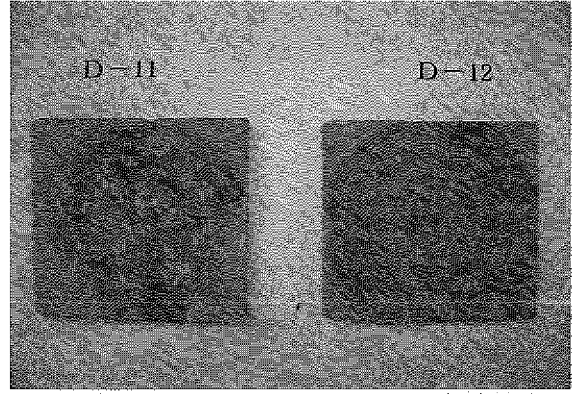
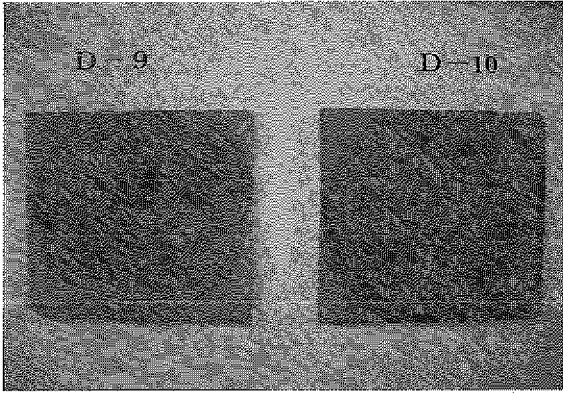




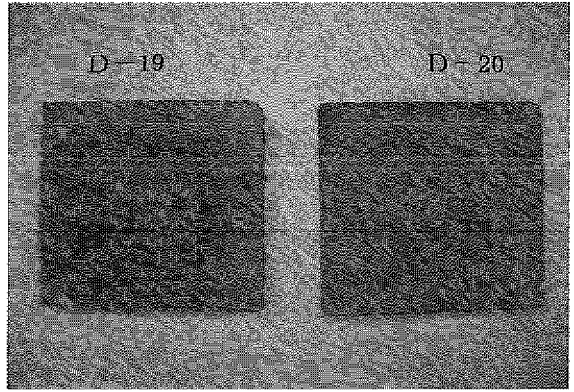
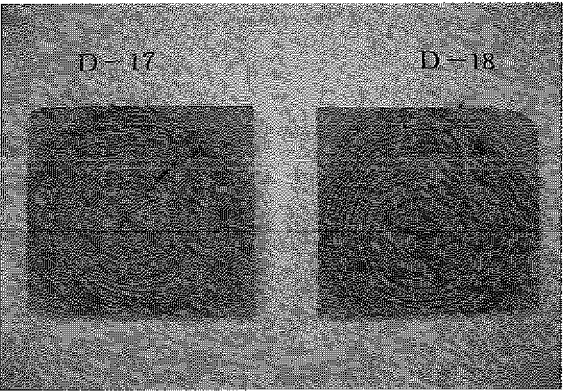
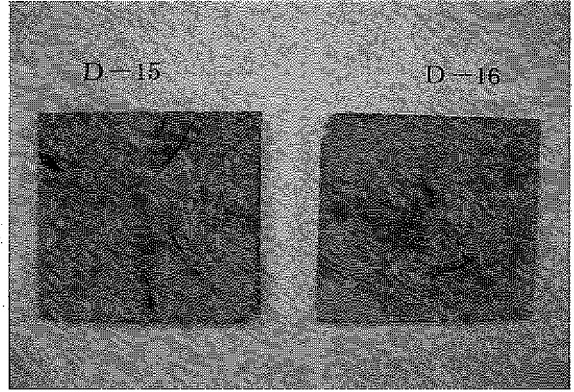
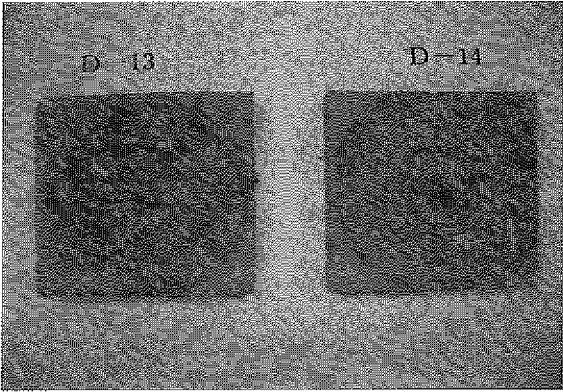
乾燥後の試験片







乾燥後の試験片





## 研 究 報 告 (2006年 No.1)

---

2006年6月 発行

編集 佐賀県林業試験場

〒840-0212

佐賀県佐賀市大和町大字池上3408

TEL 0952-62-0054

FAX 0952-51-2013

---

