

# Saga Prefecture Saishigakusha Junior High School

Opening April 2024!

- SAI** "Color" **Respectful of individuality and diversity of values**
- SHI** "Ambition" **Progress towards your goal**
- GAKUSHA** "School" **Enabling you to learn**



## Interested in studying at a junior high night school in Saga Prefecture?

A junior high night school is a "relearning" school for those who, regardless of nationality or age, were unable to fully complete their junior high school education for a variety of reasons.

School Guide



### Admission process

- In principle, students enroll in April, but admission is possible until September.
- Depending on the student's academic progress, it is also possible to enroll from the second or third year of junior high school.
- If you wish to know more about enrolling or are interested in junior high night school, please contact us at the address below.

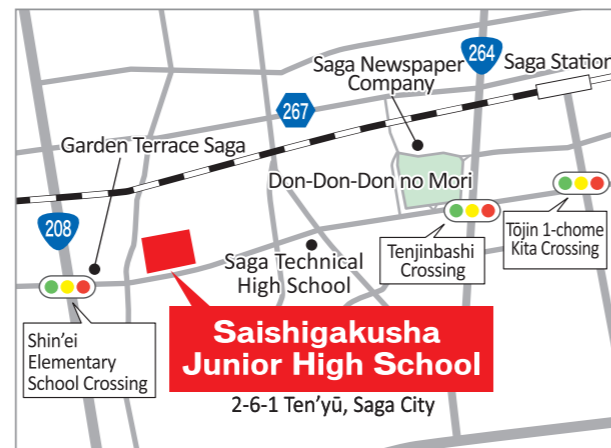
### General procedures to enroll



### Location & Access



Located inside Saga Kita High School, in the building for correspondence courses



Approximately 25 minutes on foot from Saga Station  
Approximately 1 minute walk from Kitakōmae bus stop using Saga City Bus.

### For inquiries, please contact

**Education Promotion Division,  
Saga Prefectural Board of  
Education**

1-1-59, Jōnai 1-chome, Saga-shi, Saga 840-8570

Phone: 0952-25-7476

FAX: 0952-25-7409

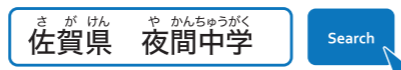
E-mail: kyouiku-shinkou@pref.saga.lg.jp



Website of the Board of  
Education



We are also on  
Twitter!



# ★ What is Saga Prefectural Saishigakusha Junior High School?

Saishigakusha Junior High School is the first nighttime public junior high school to be established in Saga Prefecture for those who have not completed compulsory education for various reasons, regardless of nationality or age, as well as for those who have not had sufficient education due to lack of attendance at school, etc., to "relearn".

**Aim of the school**

**We aim to support students in the pursuit of their own goals, respecting each student's individuality and values.**

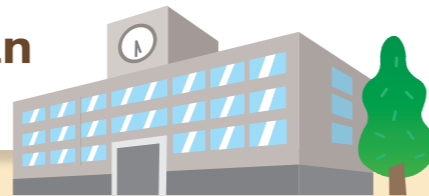
## Perspectives on the learning environment

Fulfilling classes and hands-on activities based on student preferences

Respect for diversity and flexibility for individual needs and circumstances

Creating an educational environment where everyone feels at ease and can learn effectively

**A school where students can enjoy learning new things**



## Eligibility for Admission

The applicant must reside in Saga Prefecture and meet one of the following criteria:

- Those who are older than conventional school-going age, but, for various reasons, have not completed compulsory education.
- Those who have finished junior high school, but have not received sufficient education due to lack of attendance.
- Foreign nationals who wish to receive compulsory education in Japan.

## Curriculum

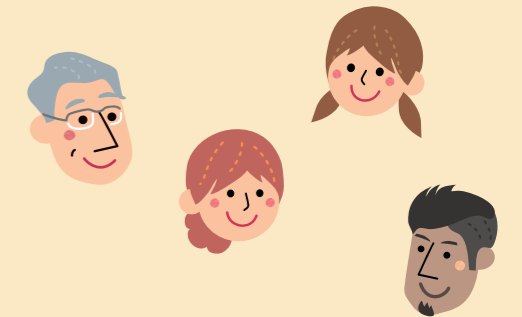
- The school offers the same 9 subjects as offered in regular junior high schools. Additionally, there will also be time for integrated studies and special activities.
- Japanese language instruction may be provided based on the student's situation. Students may also study from elementary school level. However, it is not possible to choose to study only a specific subject, or only Japanese.
- Similar to daytime education, classes will be performed by licensed teachers.
- Upon graduation, students will receive a junior high school diploma.

## Class days and hours of study

- Classes are held on weekday evenings (from 17:30 to 21:00)
- Students have classes 5 days a week, 4 hours a day, 20 hours a week.
- There will be breaks (incl. a break for dinner). Students are asked to bring their own meals as needed.

Time	Activity
~17:30	Arrive at school
17:30~17:35	Class activities
17:35~18:15	1st period
18:15~18:20	Break
18:20~19:00	2nd period
19:00~19:25	Break (dinner)
19:25~20:05	3rd period
20:05~20:10	Break
20:10~20:50	4th period
20:50~21:00	Cleaning, end-of-day meeting

Daily schedule



※Times are subject to change.

## Timetable

- The school operates on a special curriculum that differs from that of daytime junior high schools in terms of the number of classes.

	Monday	Tuesday	Wednesday	Thursday	Friday
1st period	English	English	Japanese	Mathematics	Japanese
2nd period	Mathematics	Science	Mathematics	Science	Social Studies
3rd period	Japanese	Social Studies	English	Japanese	Mathematics
4th period	Music	Ethics/Integrated Studies/ Class Activities	Physical Education	Technology/ Home Economics	Arts

※The above is an example of a weekly schedule.

※Integrated Studies is a class in which students engage in experiential learning and problem-solving learning, utilizing the skills acquired in other subjects.

## Fees

- There is no tuition fee. Textbooks are free of charge.
- Fees will be required for materials such as paints or food ingredients for art, technology, and home economics classes. In addition, fees to cover transportation and other expenses may be required for certain events, etc.

